

This Page Is Inserted by IFW Operations
and is not a part of the Official Record

BEST AVAILABLE IMAGES

Defective images within this document are accurate representations of the original documents submitted by the applicant.

Defects in the images may include (but are not limited to):

- BLACK BORDERS
- TEXT CUT OFF AT TOP, BOTTOM OR SIDES
- FADED TEXT
- ILLEGIBLE TEXT
- SKEWED/SLANTED IMAGES
- COLORED PHOTOS
- BLACK OR VERY BLACK AND WHITE DARK PHOTOS
- GRAY SCALE DOCUMENTS

IMAGES ARE BEST AVAILABLE COPY.

**As rescanning documents *will not* correct images,
please do not report the images to the
Image Problem Mailbox.**

PCT

WORLD INTELLECTUAL PROPERTY ORGANIZATION
International Bureau



INTERNATIONAL APPLICATION PUBLISHED UNDER THE PATENT COOPERATION TREATY (PCT)

<p>(51) International Patent Classification⁵ : C12N 15/54, 15/82, A01H 5/00</p>	<p>A1</p>	<p>(11) International Publication Number: WO 94/28142 (43) International Publication Date: 8 December 1994 (08.12.94)</p>
<p>(21) International Application Number: PCT/US94/06106 (22) International Filing Date: 1 June 1994 (01.06.94) (30) Priority Data: 08/076,681 1 June 1993 (01.06.93) US (71) Applicant: PHILIP MORRIS PRODUCTS INC. [US/US]: 3601 Commerce Road, Richmond, VA 23234 (US). (72) Inventors: WAHAB, Samir, Z.; 8903 Brucewood Court, Richmond, VA 23235 (US). MALIK, Vedpal, S.; 2714 Teaberry Drive, Richmond, VA 23236 (US). (74) Agents: MAGNONE, Joseph, R. et al.; Burns, Doane, Swecker & Mathis, Washington and Prince Streets, P.O. Box 1404, Alexandria, VA 22313-1404 (US).</p>		<p>(81) Designated States: BR, CN, JP, KR, MW, European patent (AT, BE, CH, DE, DK, ES, FR, GB, GR, IE, IT, LU, MC, NL, PT, SE). Published <i>With international search report. Before the expiration of the time limit for amending the claims and to be republished in the event of the receipt of amendments.</i></p>
<p>(54) Title: PUTRESCINE N-METHYLTRANSFERASE, RECOMBINANT DNA MOLECULES ENCODING PUTRESCINE N-METHYLTRANSFERASE, AND TRANSGENIC TOBACCO PLANTS WITH DECREASED ALKALOID CONTENT (57) Abstract There is provided highly purified tobacco putrescine N-methyltransferase, a process for its purification, and production of PMT DNA sequence. The purification process includes the step of applying a tobacco root extract to an anion exchange medium and specifically eluting putrescine N-methyltransferase with an elution buffer comprising putrescine.</p>		

11017 U.S. PTO
09/941042
08/28/01

FOR THE PURPOSES OF INFORMATION ONLY

Codes used to identify States party to the PCT on the front pages of pamphlets publishing international applications under the PCT.

AT	Austria	GB	United Kingdom	MR	Mauritania
AU	Australia	GE	Georgia	MW	Malawi
BB	Barbados	GN	Guinea	NE	Niger
BE	Belgium	GR	Greece	NL	Netherlands
BF	Burkina Faso	HU	Hungary	NO	Norway
BG	Bulgaria	IE	Ireland	NZ	New Zealand
BJ	Benin	IT	Italy	PL	Poland
BR	Brazil	JP	Japan	PT	Portugal
BY	Belarus	KE	Kenya	RO	Romania
CA	Canada	KG	Kyrgyzstan	RU	Russian Federation
CF	Central African Republic	KP	Democratic People's Republic of Korea	SD	Sudan
CG	Congo	KR	Republic of Korea	SE	Sweden
CH	Switzerland	KZ	Kazakhstan	SI	Slovenia
CI	Côte d'Ivoire	LI	Liechtenstein	SK	Slovakia
CM	Cameroon	LV	Latvia	SN	Senegal
CN	China	LK	Sri Lanka	TD	Chad
CS	Czechoslovakia	LU	Luxembourg	TG	Togo
CZ	Czech Republic	LV	Latvia	TJ	Tajikistan
DE	Germany	MC	Monaco	TT	Trinidad and Tobago
DK	Denmark	MD	Republic of Moldova	UA	Ukraine
ES	Spain	MG	Madagascar	US	United States of America
FI	Finland	ML	Mali	UZ	Uzbekistan
FR	France	MN	Mongolia	VN	Viet Nam
GA	Gabon				

-1-

PUTRESCINE N-METHYLTRANSFERASE,
RECOMBINANT DNA MOLECULES ENCODING PUTRESCINE
N-METHYLTRANSFERASE, AND TRANSGENIC
TOBACCO PLANTS WITH DECREASED ALKALOID CONTENT

5 TECHNICAL FIELD OF THE INVENTION

The present invention relates to highly purified putrescine N-methyltransferase, to a novel process for its purification, and to its antisense and sense genes. In particular, this invention relates to
10 the use of the sense and antisense putrescine N-methyltransferase genes to create transgenic tobacco plants having genetically altered nicotine levels. Such transgenic plants are useful in the production of cured tobacco for use in the tobacco industry.

15 BACKGROUND OF THE INVENTION

Various processes have been employed for the removal of nicotine from tobacco. Most of those processes, however, are not sufficiently selective for nicotine. They remove other ingredients from the
20 tobacco, thereby adversely affecting its flavor and aroma. In addition, such processes are typically complex and expensive.

Nicotine, and biologically synthesized compounds in general, are formed through sequences of
25 biochemical reactions, wherein each reaction is catalyzed by a different enzyme. The particular reaction sequence leading to a given compound is known as a pathway. One approach for inhibiting the operation of a pathway, and thus output of its end product, is
30 reducing the amount of a required enzyme in the pathway. If the enzyme's abundance, relative to the other enzymes of the pathway, is normally low enough to make that enzyme rate-limiting in the pathway's operation, then any reduction in the enzyme's abundance will be

-2-

reflected in lowered production of the end product. If the enzyme's relative abundance is not normally rate limiting, its abundance in the cell would have to be reduced sufficiently to make it rate-limiting, in order
5 for the pathway's output to be diminished. Similarly, if the enzyme's relative abundance is rate limiting, then any increase in its abundance will result in increased production of the pathway's end product.

Nicotine is formed primarily in the roots of
10 the tobacco plant and subsequently is transported to the leaves, where it is stored (Tso, Physiology and Biochemistry of Tobacco Plants, pp. 233-34, Dowden, Hutchinson & Ross, Stroudsburg, PA (1972)). The nicotine molecule is comprised of two heterocyclic
15 rings, a pyridine moiety and a pyrrolidine moiety, each of which is derived from a separate biochemical pathway. The pyridine moiety of nicotine is derived from nicotinic acid. The pyrrolidine moiety of nicotine is provided through a pathway leading from putrescine to
20 N-methylputrescine and then to N-methylpyrroline. An obligatory step in nicotine biosynthesis is the formation of N-methylputrescine from putrescine (Goodwin and Mercer, Introduction to Plant Biochemistry, pp. 488-91, Pergamon Press, New York, (1983)).

25 Conversion of putrescine to N-methylputrescine is catalyzed by the enzyme putrescine N-methyltransferase ("PMT"), with S-adenosylmethionine serving as the methyl group donor. PMT appears to be the rate-limiting enzyme in the pathway supplying N-
30 methylpyrroline for nicotine synthesis in tobacco (Feth et al., "Regulation in Tobacco Callus of Enzyme Activities of the Nicotine Pathway", Planta, 168, pp. 402-07 (1986); Wagner et al., "The Regulation of Enzyme Activities of the Nicotine Pathway in Tobacco", Physiol. Plant., 68, pp. 667-72 (1986)).
35

-3-

A relatively crude preparation of PMT (30-fold purification) has been subjected to limited characterization (Mizusaki et al., "Phytochemical Studies on Tobacco Alkaloids XIV. The Occurrence and Properties of Putrescine N-Methyltransferase in Tobacco Plants", Plant Cell Physiol., 12, pp. 633-40 (1971)). The purification steps leading to that preparation were limited to ammonium sulfate precipitation from the initial extract and gel filtration chromatography. Id.

Antisense RNA technology allows the production of plants characterized by levels of an enzyme (or other protein) that are significantly lower than those normally contained by the plants. Ordinarily, transcription of a gene coding for a target enzyme gives rise to a single-stranded mRNA, which is then translated by ribosomes to yield the target enzyme. An antisense RNA molecule is one whose nucleotide sequence is complementary to some portion of the target mRNA molecule. The antisense RNA molecule, thus, will undergo complementary base pairing (hybridization) with the target mRNA molecule, rendering the target mRNA molecule unavailable for translation, more susceptible to degradation, or both. The ability of the cell to produce the specific enzyme coded for by the target mRNA is thus inhibited.

Antisense technology has been employed in several laboratories to create transgenic plants characterized by lower than normal amounts of specific enzymes. For example, plants with lowered levels of chalcone synthase, an enzyme of a flower pigment biosynthetic pathway, have been produced by inserting a chalcone synthase antisense gene into the genome of tobacco and petunia. These transgenic tobacco and petunia plants produce flowers with lighter than normal coloration (Van der Krol et al., "An Anti-Sense Chalcone

-4-

Synthase Gene in Transgenic Plants Inhibits Flower Pigmentation", Nature, 333, pp. 866-69 (1988)). Antisense RNA technology has also been successfully employed to inhibit production of the enzyme

5 polygalacturonase in tomatoes (Smith et al., "Antisense RNA Inhibition of Polygalacturonase Gene Expression in Transgenic Tomatoes", Nature, 334, pp. 724-26 (1988); Sheehy et al., "Reduction of Polygalacturonase Activity in Tomato Fruit by Antisense RNA", Proc. Natl. Acad.

10 Sci. USA, 85, pp. 8805-09 (1988)), and the small subunit of the enzyme ribulose biphosphate carboxylase in tobacco (Rodermeil et al., "Nuclear-organelle

15 Interactions: Nuclear Antisense Gene Inhibits Ribulose Biphosphate Carboxylase Enzyme Levels in Transformed Tobacco Plants", Cell, 55, pp. 673-81 (1988)).

Alternatively, transgenic plants characterized by greater than normal amounts of a given enzyme may be created by transforming the plants with the gene for that enzyme in the sense (i.e., normal) orientation.

20 Genetic engineering of tobacco plants to lower or raise levels of nicotine through altered levels of PMT has not been possible, because a method for cloning PMT genes without prior purification of the PMT enzyme is not known, and a method for purification of the PMT

25 enzyme was not known prior to this invention.

BRIEF DESCRIPTION OF THE FIGURES

Figure 1 is a reproduction of a photograph of a 12.5%, silver-stained, SDS-polyacrylamide gel showing the pattern of proteins obtained at successive stages of

30 the tobacco PMT purification process. Lanes 1 and 6: molecular weight standard proteins (phosphorylase B, 95.5 kD; glutamate dehydrogenase, 55.0 kD; ovalbumin, 43.0 kD; lactate dehydrogenase, 36.0 kD, carbonic anhydrase, 29.0 kD; lactoglobulin, 18.4 kD; cytochrome

-5-

C, 12.4 kD). Lane 2: 40-65% ammonium sulfate fraction.
Lane 3: PMT activity peak fraction from hydrophobic
interaction column. Lane 4: concentrated putrescine-
eluted material from anion exchange column. Lane 5: PMT
5 activity peak fraction from free-flow isoelectric
focussing of concentrated material from anion exchange
column.

Figure 2 is a graph depicting PMT activity in
sequential 3 mm slices from a 12.5% non-denaturing
10 polyacrylamide gel, onto which had been loaded
concentrated putrescine-eluted material from an anion
exchange column. Enzymatic activity of PMT is expressed
as ¹⁴C disintegrations per minute (above background)
recovered as product, and designated "relative
15 activity".

Figure 3 is a reproduction of a photograph of
a silver-stained 12.5% SDS-polyacrylamide gel on which
successive 3 mm slices in and around the band of PMT
activity on a non-denaturing electrophoresis gel (Figure
20 2) were analyzed for purity and apparent molecular
weight. Lane designated "sm" contains starting material
(i.e., material applied to the nondenaturing gel).
Lanes designated "std" contain molecular weight standard
proteins (phosphorylase B, 95.5 kD; glutamate
25 dehydrogenase, 55.0 kD; ovalbumin, 43.0 kD; lactate
dehydrogenase, 36.0 kD, carbonic anhydrase, 29.0 kD;
lactoglobulin, 18.4 kD; cytochrome C, 12.4 kD).

Figure 4 is a graph depicting relative PMT
activity and pH of fractions obtained by isoelectric
30 focussing of tobacco PMT purified via ammonium sulfate
fractionation, hydrophobic interaction chromatography,
and putrescine elution from an anion exchange column
followed by sample concentration. Enzymatic activity of
PMT is expressed as ¹⁴C disintegrations per minute (above

-6-

background) recovered as product, and is designated "relative activity".

Figure 5 is a reproduction of a photograph of a 12.5%, silver-stained, SDS-polyacrylamide gel showing the PMT protein bands ("a1" and "a2") that were cut out (after electroblotting onto an inert membrane) and subjected to amino acid sequence determination. Samples loaded onto the gel were aliquots from fractions from isoelectric focussing of putrescine-eluted material from an anion exchange column. The actual bands used for sequence analysis were from a separate (but similar) polyacrylamide gel that was loaded with aliquots of the same material analyzed on the gel in this figure.

SUMMARY OF THE INVENTION

The present invention provides, for the first time, highly purified putrescine N-methyltransferase ("PMT"), and a novel process for its purification.

The purification process of this invention comprises the step of applying a tobacco plant extract to an anion exchange medium, wherein the application temperature and the pH and composition of the extract are such that PMT is retained by the anion exchange medium. The PMT is then eluted from the anion exchange medium with an elution buffer comprising an effective amount of a polyamine, wherein the elution temperature and the pH and chemical composition of the elution buffer are such that but for the polyamine, the PMT would be retained by the anion exchange medium.

In a preferred embodiment, the eluate of the anion exchange medium is concentrated by directly applying the eluate to a chromatography medium having an affinity for PMT in the presence of the anion exchange medium elution buffer, and then eluting the bound material. Most preferably, the outlet from the anion

-7-

exchange column is connected to the inlet of an omega-aminoethyl agarose column, on which dilute PMT from the anion exchange column is collected, for subsequent elution in a more concentrated form.

5 The PMT of this invention has a molecular weight of between about 55 and 65 kilodaltons, a native isoelectric point of between about pH 5.0 and 6.0, a K_m for putrescine of between about 300 μ M and 500 μ M, and a K_m for S-adenosylmethionine of between about 100 μ M and
10 150 μ M. In a preferred embodiment, the PMT comprises a sequence of 17 amino acids selected from the amino acid sequences defined in the Sequence Listing as SEQ ID NO:1, SEQ ID NO:2, and SEQ ID NO:3.

 The present invention also provides sense and
15 antisense recombinant DNA molecules encoding putrescine N-methyltransferase, and vectors comprising those recombinant DNA molecules, as well as transgenic tobacco cells and plants transformed with those DNA molecules and vectors. The transgenic tobacco cells and plants of
20 this invention are characterized by lower or higher nicotine content than untransformed control tobacco cells and plants.

DETAILED DESCRIPTION OF THE INVENTION

Purification of PMT

25 Starting material for purification of PMT consists of tobacco roots. Preferably, the roots are harvested from hydroponically grown tobacco plants. Hydroponic cultivation facilitates growth of the plants under highly controlled, reproducible conditions, and it
30 allows efficient harvest of the extensive, filamentous root system in a clean, intact condition.

 Tobacco seeds are allowed to germinate at or near the surface of a moist plant potting mixture. Most

-8-

preferred conditions are about 80°F and 60% relative humidity. About two weeks after seed germination, seedlings are thinned (removed) to leave sufficient room for unhindered growth of the remaining seedlings to a stage at which they are about six inches tall, and have about six leaves. When the seedlings reach a height of about six inches they are typically transplanted, with root system and pellet of potting material intact, into a hydroponic device containing a suitable nutrient solution and a means for aeration (oxygenation) of the nutrient solution. The hydroponic device also should provide for replenishment of the dissolved nutrients, and should be of a size sufficient to accommodate a fully grown tobacco plant.

It is well known in the art that removal of the flower head (topping), a standard practice in commercial tobacco cultivation, increases root growth and increases nicotine content of the leaves. Therefore, plants to be used as a starting material for purification of PMT normally are topped at an appropriate stage of development. The appropriate interval separating planting and topping depends on several factors including, inter alia, plant variety, light intensity, photoperiod, soil and air temperatures, soil moisture, and mineral nutrition. Typically, however, the roots are harvested 3 to 7 days after topping. The optimal time for topping a given tobacco variety cultivated under a given set of growing conditions can readily be determined by one of ordinary skill in the art.

Preferably, the harvested roots are washed with cold water, and then residual water is removed by aspiration in a Buchner funnel. The washed roots are then either used fresh, or frozen at -80°C immediately

-9-

after harvesting. The frozen roots are stored at about -80°C until use.

For a typical PMT purification procedure, between about 400 and 600 g of frozen root tissue per
5 liter of extraction buffer is homogenized in a high speed blender. The extraction buffer typically contains effective amounts of one or more buffering agents, one or more reducing agents, one or more heavy metal chelating agents, one or more water activity modifying
10 agents, and one or more protease inhibitors. Preferably, the extraction buffer also will contain an effective amount of one or more phenolic compound adsorbing agents. The effective amounts of these agents depends on the particular agents used; however, amounts
15 used generally will be chosen from among the typical amounts used during purification of plant proteins. The choice of agents and their effective amounts is, thus, well within the skill of the ordinary worker.

The pH of the extraction buffer should be
20 between about 7.2 and 8.3, and preferably about 7.5. Any water-soluble compound that has a dissociation constant (pK_a) giving it effective pH buffering capacity at the desired pH may be used. Preferred buffering agents are also essentially transparent to ultraviolet light.
25 Suitable buffering agents include, inter alia, tris(hydroxymethyl)aminomethane ("Tris"), imidazole, phosphate, N-morpholinopropane sulfonic acid ("MOPS"), N-tris(hydroxymethyl)methyl-2-aminoethane sulfonic acid ("TES"), triethanolamine, and N-tris(hydroxymethyl)-
30 methyl-glycine ("Tricine"). Tris buffer is preferred.

Reducing agents are added to the extraction buffer in order to inhibit possible oxidation of protein
sulfhydryl groups, and possible oxidation of plant
phenolic compounds to reactive free radicals, both of
35 which events might inactivate PMT. Suitable reducing

-10-

agents include, inter alia, dithiothreitol ("DTT"), dithioerythritol, 2-mercaptoethanol, thioglycolate, glutathione, cysteine, and ascorbate. DTT and ascorbate are preferred.

5 Heavy metal chelating agents are added to the extraction buffer in order to prevent activation of proteases and possible inactivation of PMT by heavy metals through direct interaction with PMT or through
10 species that inactivate PMT. The preferred heavy metal chelating agent is ethylene diaminetetraacetic acid ("EDTA"), but other conventional chelating agents, such as ethylene glycol bis(beta-aminoethyl ether) N,N,N',N'-tetraacetic acid ("EGTA") and citrate, may be used.

15 Water activity modifying agents are added to the extraction buffer in order to stabilize PMT against possible denaturation and other more subtle conformational changes that might result in PMT
20 inactivation. Such water activity modifying agents are non-ionic, hydrophilic compounds that lower the water activity of an aqueous solution to which they are added. Glycerol, ethylene glycol, and low molecular weight polyethyleneglycol (e.g., "PEG 400") are preferred, but
25 glucose, sucrose, fructose, and sorbitol are examples of other compounds useful as water activity modifying agents.

 Protease inhibitors usually are added to the extraction buffer in order to prevent possible
30 inactivation of PMT through proteolytic cleavage by proteolytic enzymes that may be released during tissue homogenization. Useful protease inhibitors include, inter alia, phenylmethanesulfonyl fluoride ("PMSF"), leupeptin, aprotinin, chymostatin and pepstatin. PMSF and leupeptin are preferred.

-11-

A phenolic compound adsorbing agent preferably is added to the extraction buffer to remove phenolic plant compounds that might, if present, inactivate or precipitate PMT following their oxidation when the plant cells are broken. Typically, insoluble polyvinylpyrrolidone ("PVPP") and Amberlite XAD-4 are suspended in the extraction buffer to adsorb phenolic compounds. Other materials that remove or inactivate phenolic compounds without significant harm to PMT enzyme activity could be included with or substituted for PVPP or Amberlite XAD-4.

Prior to addition of the root tissue, the extraction buffer is cooled to between about -15 and -20°C to form a frozen slurry. During the homogenization process, the temperature of the homogenate should not be allowed to rise above about 3 to 5°C.

As will be appreciated by those of ordinary skill in the art, the quantity of root tissue used in the process can be varied, but the approximate weight of the tissue used should be measured, and the amounts of other components used adjusted accordingly.

After homogenization, insoluble material (including PVPP with adsorbed phenolics) preferably is removed from the homogenate. Preferably, this is accomplished by sedimentation for between about 30 to 90 minutes at about 4°C, in a refrigerated centrifuge set at about 10,000 to 20,000 x g. The soluble extract (i.e., the supernatant) is decanted after sedimentation of the insoluble material. The final protein concentration of the soluble extract is generally about 2.5 to 3.5 mg/ml.

The soluble extract is subjected to ammonium sulfate fractionation, and a 40% to 65% ammonium sulfate fraction (precipitate) is collected from the soluble

-12-

extract according to standard methods (Scopes, Protein Purification Principles and Practice, pp. 48-52, Springer-Verlag, New York (1982)). That fraction then is dissolved in about 0.1 to 0.4 ml of a dissolution
5 buffer per g of root weight.

The preferred buffer for dissolution of the 40% to 65% ammonium sulfate fraction contains effective amounts of a buffering agent, a heavy metal chelating agent, a reducing agent, a water activity-modifying
10 agent, and protease inhibitors. The most preferred dissolution buffer contains Tris buffer (pH about 7.5) (about 10 to 20 mM), EDTA (about 1 to 10 mM), glycerol (about 10 to 30%), DTT (about 1 to 10 mM), PMSF (about 0.2 to 10.0 mg/1), and leupeptin (about 0.2 to 10.0
15 mg/1). These buffer components are included for the purposes described above for the analogous components in the extraction buffer. The skilled worker will appreciate that these components may be substituted with others of similar function.

20 The ammonium sulfate fraction may then be desalted by standard techniques -- e.g., dialysis or sieving chromatography -- and the desalted fraction directly subjected to anion exchange chromatography, as described below. In a preferred embodiment, however,
25 the ammonium sulfate fraction first is subjected to hydrophobic interaction chromatography.

Before the dissolved ammonium sulfate fraction is subjected to hydrophobic interaction chromatography, salt is added to give a salt concentration that is high
30 enough to ensure that PMT binds to the hydrophobic interaction medium. The preferred concentration of added salt is 1.5 N. The preferred added salt is NaCl. Another useful salt is ammonium sulfate.

The preferred hydrophobic interaction medium
35 comprises approximately spherical particles of cross-

-13-

linked agarose gel, of a size suitable for chromatography, bearing covalently bonded phenyl groups. Such phenylagarose is commercially available as "phenyl-Sepharose CL-4B" (Pharmacia-LKB, Inc., Piscataway, NJ, Cat. No. 17-0810-01).

Hydrated phenylagarose is packed into a suitable chromatography column using standard procedures, and is equilibrated at about 4 to 8°C with a high salt equilibration buffer having a pH of from between about 7.2 to 8.3, and preferably about 7.5. The preferred high salt equilibration buffer contains effective amounts of a buffering agent, a heavy metal chelating agent, a water activity modifying agent, a reducing agent, and salt at a concentration of between about 1.5 to 2.0 M. The most preferred high salt equilibration buffer solution contains about 10 mM Tris (pH about 7.5), about 1.5 M NaCl, about 1 mM EDTA, about 2 mM DTT, and about 20% (v/v) glycerol.

A sample of the salt-adjusted soluble extract (about 0.5 to 2.0 ml of extract per ml phenylagarose packed bed volume) is loaded onto the equilibrated phenylagarose column, and the column is washed with the equilibration buffer until the eluate becomes essentially free of proteinaceous material. If the buffering agent is transparent to ultraviolet light, this may be determined by measuring ultraviolet light absorbance at around 280 nm. Generally, the phenylagarose column is washed with about 5 to 7 column volumes of equilibration buffer. PMT remains bound to the hydrophobic interaction medium.

Proteins still adsorbed to the phenylagarose matrix (including PMT) are then eluted at 4 to 8°C with between about 4 to 6 column volumes of an elution buffer containing a linear salt gradient decreasing from the load salt concentration (preferably about 1.5 M) to

-14-

about 0.0 M, followed by an additional 2 to 3 column volumes of elution buffer without salt. Preferably, the elution buffer will include Tris (about 10 mM) (pH about 7.5), DTT (about 2 mM), and EDTA (about 1 mM), and
5 glycerol (about 20% v/v).

Fractions of between about 0.01 to 0.03 column volumes are collected and assayed for PMT activity as described below and for absorbance at 280 nm. Typically, the pooled eluate fractions have a volume of
10 between about 1 to 2 column volumes, and a protein concentration of between about 0.4 and 2.5 mg/ml.

It will be understood that salts other than the preferred NaCl may be used in the foregoing buffers. Such salts include potassium chloride and ammonium
15 sulfate.

The critical step of the purification process of this invention is a novel anion exchange chromatography step, performed as described below. In order to perform this step, however, the tobacco plant
20 extract applied to the column (e.g., preferably, the phenylagarose eluate) must have a pH and chemical composition such that the PMT in the extract will bind to the anion exchange medium. That is, the extract should have a pH of between about 7.2 and 8.3, comprise
25 between about 0.0 and 10 mM salt, and preferably should further comprise the following: between about 5 and 15 mM of a buffering agent, between about 1 and 10 mM of a reducing agent, between about 10 and 30% (v/v) of a water activity modifying agent, and between about 1 and
30 5 mM of a heavy metal chelating agent. Most preferably, the tobacco plant extract comprises 10 mM Tris/HCl, pH 7.5, 2 mM DTT, 1 mM EDTA and 20% (v/v) glycerol.

The skilled worker will, of course, appreciate that the pH and salt concentration of the tobacco plant
35 extract may be varied in concert from the values recited

-15-

above, resulting in a load condition at which the PMT still will bind to the anion exchange medium. In particular, it is well known that an increase in salt concentration generally will decrease the binding of a protein to an anion exchange medium and an increase in pH generally will increase binding of a protein to an anion exchange medium. The skilled worker, therefore, could easily determine various combinations of salt concentration and pH, other than those recited above, at which PMT will bind to the anion exchange medium. The only constraint on the possible pH/salt concentration combinations is that the pH may not be so high as to denature and inactivate PMT. Generally, PMT should not be exposed for significant periods of time to a pH above about 9.

From the foregoing, it is clear that if the tobacco root extract to be applied to the anion exchange medium is an ammonium sulfate fraction or the eluate from the above-described hydrophobic interaction chromatography step, then it must be desalted into an appropriate buffer. This may be accomplished by any standard technique. For example, gel filtration chromatography (using, e.g., Sephadex G-25) or dialysis may be employed, using well known procedures. Preferably, such desalting will be accomplished by dialysis.

In a preferred process, the pooled eluate from the above hydrophobic interaction chromatography step (or another high salt tobacco root extract) is dialyzed at about 4 to 8°C against a dialysis buffer with about 15 to 25 ml dialysis buffer per ml of pooled eluate or extract, for about 8 to 20 hours. Preferably, the dialysis buffer will be stirred. A dialysis membrane having a 10,000 kD cut-off is preferred. The chemical composition and pH of the

-16-

dialysis buffer is chosen so that PMT in the dialyzed fraction will be retained by the anion exchange medium, as described above.

The anion exchange medium should consist of
5 relatively rigid particles (e.g., crosslinked agarose),
of a size suitable for chromatography, that bear one or
more functional anion exchange moieties. Such anion
exchange moieties may be selected, inter alia, from the
group consisting of diethylaminoethyl, polyethylene-
10 imino, tertiary amino, quaternary amino, p-aminobenzyl,
and diethyl-(2-hydroxypropyl)aminoethyl. Such media are
commercially available. An anion exchange medium
bearing diethylaminoethyl ("DEAE") moieties is
preferred. DEAE-agarose ("DEAE-Sepharose, Fast Flow",
15 Pharmacia-LKB, Inc., Piscataway, NJ, Cat. No. 17-0709-
01) is most preferred.

The anion exchange medium is equilibrated to
the pH and salt condition of the equilibration buffer,
according to standard procedures.

20 The equilibrated anion exchange medium then is
packed according to standard procedures into a column
(i.e., a hollow tube) having at its bottom a means of
retaining the medium (e.g., a sintered glass disk) and
an outlet tube. The top of the column is then covered
25 and connected to an inlet tube. Then, preferably,
equilibration buffer should be run through the column,
and the pH and conductivity of the flowthrough
monitored, to ensure that the medium is properly
equilibrated.

30 The column should contain enough anion
exchange medium so that the proteins in the tobacco
plant extract to be applied would occupy no more than
about 50% of the medium's capacity if they all were to
bind. For example, when the tobacco plant extract to be
35 applied is the above-described dialyzed phenylagarose

-17-

eluate, the column should contain about 0.04 to 0.10 ml (packed bed volume) of DEAE-agarose per ml of dialyzed phenylagarose eluate.

Preferably, the column is packed and the
5 medium equilibrated at the same temperature at which the tobacco plant extract is to be applied. If the column is to be washed or eluted at a warmer temperature than that at which the tobacco plant extract is applied, then the slurry containing the anion exchange matrix may be
10 degassed prior to packing the column.

As described above for the tobacco plant extract to be applied to the anion exchange medium, the anion exchange medium equilibration buffer must have a pH and chemical composition such that PMT is retained by
15 the medium. Similarly, the skilled worker easily may determine suitable pH/chemical composition combinations. The preferred equilibration buffer contains essentially no added salt and has a pH of between about 7.2 to 8.3, most preferably 7.5. A more preferred equilibration
20 buffer contains effective amounts of a buffering agent, a heavy metal chelating agent, a reducing agent, and a water activity modifying agent. The most preferred equilibration buffer contains 10 mM Tris/HCl (pH 7.5), 1 mM EDTA, 2 mM DTT, and 20% (v/v) glycerol.

Preferably, the tobacco plant extract, the
25 equilibration buffer and the anion exchange medium are all at a temperature of between about 2 to 10°C, and most preferably between about 4 to 8°C before and during equilibration, loading, and washing of the column.

The tobacco plant extract is applied at a flow
30 rate of between about 0.1 to 0.3 column volumes/min. The flowthrough from the tobacco plant extract application contains practically no PMT, and is discarded. The column is then washed with equilibration
35 buffer until elution of proteinaceous material

-18-

stabilizes at a low level. If the equilibration buffer does not contain a buffering agent that absorbs at 280 nm, the column is washed with elution buffer until the UV absorbance at 280 nm stabilizes at a low level.

5 Typically, the anion exchange medium is washed with 5 to 12 column volumes of equilibration buffer with 10 mM NaCl, and then another 3 to 10 column volumes of equilibration buffer without NaCl. PMT is retained by the anion exchange medium during the washing step.

10 After washing, PMT is eluted from the anion exchange medium with an elution buffer comprising an effective amount of a polyamine, wherein the elution temperature and the pH and chemical composition of the elution buffer are such that but for the polyamine, the
15 PMT would be retained by the anion exchange medium.

The polyamine in the elution buffer is selected from the group consisting of putrescine, N-methylputrescine, spermine, spermidine, agmatine, cadaverine, and mixtures thereof. Putrescine is the
20 preferred polyamine. The polyamine should be present in the elution buffer at a concentration of between about 0.5 to 50 mM, preferably 1 to 10 mM, and most preferably at about 5 mM.

The elution buffer preferably further
25 comprises effective amounts of a buffering agent, a heavy metal chelating agent, a reducing agent, and a water activity modifying agent. Those components are as described above for the extraction buffer. The effective amounts of these components may be determined
30 without undue experimentation by the skilled worker. The pH of the elution buffer should be between about 7.2 and 8.3, preferably about 7.5. The anion exchange medium equilibration buffer, when supplemented with a polyamine, is a suitable elution buffer. A preferred
35 elution buffer contains 10 mM Tris/HCl (pH 7.5), 1 mM

-19-

EDTA, 20% (by volume) glycerol, 2 mM DTT, and 5 mM putrescine (1,4-diaminobutane) (Sigma Chemical Co., St. Louis, MO, Cat. No. P7505).

Elution of PMT from the anion exchange column is preferably carried out at between about 18 to 26°C (i.e., room temperature). The elution buffer and the anion exchange column should be at the chosen elution temperature before elution is commenced.

To elute PMT from the column, elution buffer is applied at a flow rate of between about 0.02 to 0.10 column volumes/min, and fractions are collected from the bottom of the column. The eluate also may be collected into a single eluate pool. In the most preferred elution process, approximately one column volume of elution buffer is applied to the column, and the flow is then stopped. The anion exchange medium is left in contact with that aliquot of elution buffer for between about 1 to 6 hours, preferably about one hour. Application of elution buffer is then recommenced.

PMT elutes from the anion exchange medium very gradually. Typically, the anion exchange medium is eluted with between about 40 and 70 column volumes of elution buffer, and most preferably at least 50 column volumes of elution buffer. PMT activity of eluted fractions is assayed, as described below, to monitor PMT elution.

As PMT is recovered in a relatively dilute form and in a relatively large volume, it is desirable to concentrate the anion exchange eluate. The eluate may, for example, be applied to any chromatography medium which has an affinity for PMT in the presence of the anion exchange medium elution buffer, and from which the bound material can be eluted with good yield in a relatively concentrated form. Alternatively, the PMT may be precipitated. In a preferred process of this

-21-

The PMT obtained after the anion exchange and sample concentration steps is further purified by preparative scale isoelectric focussing. Isoelectric focussing involves placing the sample mixture in a stabilized pH gradient, across which a voltage is then applied. Each protein species migrates electrophoretically toward the point in the pH gradient at which the net electrical charge of that protein species is zero. The pH at which a protein has a net electric charge of zero is called that protein's isoelectric point.

Various pH gradient stabilizing media, including, inter alia, sucrose solutions and polyacrylamide gels, can be used. Similarly, various methods of fractionating the pH gradient to recover proteins after isoelectric focussing can be employed. The pH gradient fractionation method should be chosen so as to be compatible with the gradient stabilizing medium.

The preferred pH gradient stabilizing medium is a sucrose solution (density gradient) contained in a glass tube. Most preferably, the sucrose density gradient contains a pH gradient ranging from about pH 5 to about pH 6. The preferred gradient fractionation method is precisely controlled liquid flow through a stopcock. Fractions collected are tested for pH and PMT activity. Apparatuses, chemicals, and protocols for isoelectric focussing are available from several commercial sources.

PMT isolated by the process of this invention is substantially free of other tobacco proteins, in that PMT is the predominant protein in the preparation. The few contaminating tobacco proteins in the preparation are separated from PMT by sodium dodecyl sulfate polyacrylamide gel electrophoresis ("SDS-PAGE"),

-22-

according to standard techniques. In this way, sufficiently pure PMT for amino acid sequence analysis is obtained.

Characterization of PMT

5 Tobacco PMT is characterized by a molecular weight of between about 55 and 65 kilodaltons, as determined by SDS-PAGE, and a native isoelectric point of between about pH 5.0 and 6.0, as measured by isoelectric focussing.

10 Tobacco PMT is further characterized by the ability to catalyze the transfer of the methyl group of S-adenosylmethionine to the delta amino group of putrescine, and by high substrate specificity for putrescine.

15 The Michaelis-Menten constant (K_m) is defined as the substrate concentration at which the initial reaction velocity is equal to one half of the maximal velocity of the reaction. K_m values vary widely, even for separate enzyme species that catalyze the same
20 reaction. K_m measurements are thus useful "identity markers" for enzymes. Partially purified tobacco PMT is characterized by a K_m for putrescine of between about 300 and 500 μ M. Highly purified tobacco PMT of the present invention is characterized by a K_m for
25 S-adenosylmethionine of between about 100 and 150 μ m.

Determination of Partial Amino Acid Sequence of PMT

In preparation for amino acid sequence analysis, the standard technique of SDS-PAGE is used to separate PMT from the few contaminating proteins that
30 remain after the anion exchange, sample concentration, and isoelectric focussing steps. Detailed protocols for SDS-PAGE are found in Laemmli, "Cleavage of Structural Proteins During the Assembly of the Head of

-23-

Bacteriophage T4", Nature, 227, pp. 680-85 (1970); and in manuals supplied by manufacturers of electrophoresis equipment. By well known techniques, bands containing individual proteins are transferred electrophoretically (electroblotted) onto thin sheets or membranes, where they are retained and visualized. In one well-known method, protein bands are electroblotted onto glass microfiber sheets coated with a hydrophobic polycation, such as poly(4-vinyl-N-methylpyridinium) iodide, and visualized by a non-anionic agent such as fluorescamine. Another method involves electroblotting of proteins onto polyvinylidene difluoride membranes ("Immobilon-P", Millipore, Bedford, MA) and visualization of bands by an anionic dye such as amido black (Bauw et al, "Alterations in the Phenotype of Plant Cells Studied by NH₂-Terminal Amino Acid Sequence Analysis of Proteins Electroblotted from Two Dimensional Gel-Separated Total Extracts", Proc. Natl. Acad. Sci. USA 84, pp. 4806-10 (1987); A Practical Guide to Protein and Peptide Purification for Microsequencing, Paul T. Matsudaira (ed.), Academic Press, New York, (1989)).

The aforementioned techniques for transferring isolated proteins from electrophoretic gels and visualizing the transferred proteins are preferred. However, it will be appreciated by those skilled in the art that variations in materials and procedures used to prepare electrophoretically isolated proteins for sequence analysis are not excluded from the present invention.

The bands constituting purified PMT are identified by apparent molecular weight (i.e., about 60 kD). Following transfer of the protein bands from electrophoresis gel to membrane, and visualization of the transferred bands, the pieces of membrane bearing the individual bands of purified PMT are cut out

-24-

precisely, so as to avoid contamination from any adjacent protein band.

The protein bands (isolated as described above) constituting purified tobacco PMT are subjected
5 to amino terminal sequence analysis by standard automated methods. Tobacco PMT proteins comprise an amino acid sequence selected from SEQ ID NO:1, SEQ ID NO:2, and SEQ ID NO:3.

SEQ ID NO:1 is from the "a1" band (Fig. 5).
10 SEQ ID NO:2 is from the "a2" band (Fig. 5). SEQ ID NO:3 is the consensus sequence of SEQ ID NO:1 and SEQ ID NO:2.

Highly homologous sequences from closely adjacent purified protein bands suggest the existence of
15 multiple forms of tobacco PMT protein. Such multiple forms of tobacco PMT protein may arise from post-translational modification of a single gene product, or from multiple forms of PMT genes.

Cloning Of PMT DNA Sequences

20 The partial amino acid sequences (SEQ ID NO:1, SEQ ID NO:2, SEQ ID NO:3) of the PMT proteins of this invention are used to design a set of oligonucleotides, one or more of which selectively hybridizes with PMT sequences in a tobacco root cDNA library. This
25 selective hybridization is used to identify cDNA clones containing sequences encoding part or all of a PMT protein. A description of the design of oligonucleotide probes from amino acid sequences is presented in Chapter 11 of Sambrook et al. Molecular Cloning - A Laboratory
30 Manual, Cold Spring Harbor Press (1989).

Synthesis of such oligonucleotide probes is carried out routinely with commercially available, automated equipment.

-25-

Construction of cDNA libraries is now a routine task in molecular biology laboratories. See generally Chapter 8 of Sambrook et al., *supra*. Similarly, screening of cDNA libraries with

5 oligonucleotide probes, to identify clones containing sequences of interest, is now commonplace and well within the capability of those of skill in the art. A description of the use of oligonucleotides for screening cDNA libraries is found in Chapter 11 of the laboratory

10 manual by Sambrook et al., *supra*. The cDNA clones selected on the basis of hybridization with oligonucleotide probes are characterized as to size, presence of restriction sites, and nucleotide sequence. Such methods of DNA analysis are well described in,

15 *inter alia*, publications by Sambrook et al., *supra*, and Ausubel et al. Short Protocols in Molecular Biology, Green Publishing Associates and Wiley Interscience, New York (1989). Any PMT cDNA clone obtained in this way can itself be used as a probe for identification of

20 additional PMT cDNA clones.

A tobacco (*Nicotiana tabacum* L. var. NK326) genomic library is commercially available (Clontech Laboratories, Inc., Palo Alto, CA). Such a genomic library is screened according to protocols supplied by

25 the vendor, to obtain the chromosomal gene(s) encoding tobacco PMT.

In addition to the aforementioned methods, one of skill in the art may advantageously employ polymerase chain reaction ("PCR") methods to obtain the desired PMT

30 cDNA clones. The basic principle of PCR is rapid amplification of a segment of DNA that lies between two regions of known sequence. Various PCR techniques have been developed for use in the detection, analysis and construction of specific DNA molecules. Equipment,

35 chemicals and protocols for numerous applications of PCR

-26-

technology are commercially available. For a general discussion of PCR methods, see chapter 14 of Sambrook et al. (supra).

5 A PCR method preferred in the practice of the present invention is known as RNA PCR. There are two basic steps in RNA PCR: (1) reverse transcriptase synthesis of a first cDNA strand using RNA as a template in the presence of a reverse primer, and (2) Taq polymerase synthesis of the complementary cDNA strand, 10 followed by Taq polymerase amplification of both strands, in the presence of both the forward and reverse primers.

A PMT cDNA molecule may be obtained by application of the RNA PCR method, using tobacco root 15 poly(A⁺) RNA as a template with oligonucleotide primers based on known PMT partial amino acid sequences.

Accordingly, this invention provides recombinant DNA molecules encoding tobacco PMT proteins.

20 Production Of Transgenic Tobacco Cells and Plants Stably Transformed With PMT DNA Sequences In The Sense Or Antisense Orientation

This invention also provides transgenic tobacco cells and plants stably transformed with recombinant DNA molecules, operably linked to regulatory 25 sequences, that encode tobacco PMT proteins and that encode PMT antisense RNA molecules.

To produce a tobacco plant having lower nicotine content than an untransformed control tobacco plant, a tobacco cell is transformed with an artificial 30 PMT antisense transcriptional unit comprising a partial PMT cDNA sequence, a full-length PMT cDNA sequence, a partial PMT chromosomal sequence, or a full-length PMT chromosomal sequence, cloned in the antisense orientation, with appropriate operably linked regulatory 35 sequences. Appropriate regulatory sequences include a

-27-

transcription initiation sequence ("promoter"), and a polyadenylation/transcription termination sequence.

- Expression of antisense sequences in transgenic tobacco plants typically utilizes the
- 5 Cauliflower Mosaic Virus (CaMV) 35S promoter. See, e.g., Cornelissen et al., "Both RNA Level and Translation Efficiency are Reduced by Anti-Sense RNA in Transgenic Tobacco", Nucleic Acids Res. 17, pp. 833-43 (1989); Rezaian et al., "Anti-Sense RNAs of Cucumber
- 10 Mosaic Virus in Transgenic Plants Assessed for Control of the Virus", Plant Molecular Biology 11, pp. 463-71 (1988); Rodermeil et al., "Nuclear-organelle Interactions: Nuclear Antisense Gene Inhibits Ribulose Biphosphate Carboxylase Enzyme Levels in Transformed
- 15 Tobacco Plants", Cell 55, pp. 673-81 (1988); Smith et al., "Antisense RNA Inhibition of Polygalacturonase Gene Expression in Transgenic Tomatoes", Nature 334, pp. 724-26 (1988); Van der Krol et al., "An Anti-Sense Chalcone Synthase Gene in Transgenic Plants Inhibits
- 20 Flower Pigmentation", Nature 333, pp. 866-69 (1988). Use of the CaMV 35S promoter for expression of PMT in the transformed tobacco cells and plants of this invention is preferred. Use of the CaMV promoter for expression of other recombinant genes in tobacco roots
- 25 has been well described (Lam et al., "Site-Specific Mutations Alter In Vitro Factor Binding and change Promoter Expression Pattern in Transgenic Plants", Proc. Natl. Acad. Sci. USA 86, pp. 7890-94 (1989); Poulsen et al., "Dissection of 5' Upstream Sequences for
- 30 Selective Expression of the Nicotiana plumbaginifolia rbcS-8B Gene", Mol. Gen. Genet. 214, pp. 16-23 (1988)).

While use of the CaMV 35S promoter is preferred, it should be appreciated that other promoters are successfully used for expression of foreign genes in

35 tobacco plants, and the use of promoters other than the

-28-

CaMV 35S promoter falls within the scope of the present invention.

Various transcription termination sequences are known. The source and identity of the transcription termination sequence is primarily a matter of convenience. For example, the nopaline synthase ("NOS"), octopine synthase ("OCS"), and CaMV polyadenylation/transcription termination sequences are used for expression of foreign genes in transgenic tobacco plants, and would be useful for expression of PMT sequences. See, e.g., Rezian et al., supra, and Rodermeil et al., supra.

Standard techniques, such as restriction mapping, Southern blot hybridization, and nucleotide sequence analysis, are then employed to identify clones bearing PMT sequences in the antisense orientation, operably linked to the regulatory sequences (i.e., promoter and polyadenylation/transcription termination sequences).

There is a well-developed technology applicable for introduction of exogenous DNA into the genome of tobacco cells so as to produce transgenic tobacco cells, stably transformed with the exogenous DNA. Any of the numerous known methods of tobacco cell transformation can be used in practicing the present invention. Methods for tobacco cell transformation are conveniently classified on the basis of whether or not they utilize components of the *Agrobacterium* system.

Agrobacterium tumefaciens is a gram negative bacterium that harbors a plasmid with nucleotide sequences called "T-DNA" (for transferred DNA), that are efficiently transferred and integrated into chromosomes of dicotyledonous plants (including tobacco) in nature, causing tumor growth on infected plants. This naturally-occurring vector system for integration of

-29-

foreign DNA into plant chromosomes has been extensively studied, modified, and exploited for plant genetic engineering. (Deblaere et al., "Efficient Octopine Ti Plasmid-Derived Vectors for Agrobacterium- Mediated Gene Transfer to Plants", Nucleic Acids Research 13, pp. 4777-88 (1985)). Naked recombinant DNA molecules comprising PMT DNA sequences operably linked, in the sense or antisense orientation, to regulatory sequences are joined to-appropriate T-DNA sequences by conventional methods. These are introduced into tobacco protoplasts by polyethylene glycol techniques or by electroporation techniques, both of which are standard. Alternatively, such vectors comprising recombinant DNA molecules encoding PMT are introduced into live Agrobacterium cells, which then transfer the DNA into the tobacco plant cells (Rogers et al., "Gene Transfer in Plants: Production of Transformed Plants Using Ti Plasmid Vectors", Methods in Enzymology 118, pp. 627-40 (1986)).

Although widely used in the art, Agrobacterium technology is not a necessary component of the present invention. Transformation by naked DNA without accompanying T-DNA vector sequences can be accomplished via fusion of tobacco protoplasts with DNA-containing liposomes or via electroporation. (Shillito et al., "Direct Gene Transfer to Protoplasts of Dicotyledonous and Monocotyledonous Plants by a Number of Methods, Including Electroporation", Methods in Enzymology 153, pp. 313-36 (1987)). Naked DNA unaccompanied by T-DNA vector sequences can also be used to transform tobacco cells via inert, high velocity microprojectiles (BIOLISTIC™ Particle Delivery System, DuPont, Wilmington, DE).

Preferably, the PMT recombinant DNA molecules and vectors used to produce the transformed tobacco

-30-

cells and plants of this invention will further comprise a dominant selectable marker gene. Suitable dominant selectable markers for use in tobacco include, inter alia, antibiotic resistance genes encoding neomycin phosphotransferase, hygromycin phosphotransferase, and chloramphenicol acetyltransferase. Another well-known dominant selectable marker suitable for use in tobacco is a mutant dihydrofolate reductase gene that encodes methotrexate-resistant dihydrofolate reductase (Deblaere et al., supra). DNA vectors containing suitable antibiotics are commercially available.

Transformed tobacco cells are selected out of the surrounding population of non-transformed cells by placing the mixed population of cells into a culture medium containing an appropriate concentration of the antibiotic (or other compound normally toxic to tobacco cells) against which the chosen dominant selectable marker gene product confers resistance. Thus, only those tobacco cells that have been transformed will survive and multiply.

Transformed cells are induced to regenerate intact, fertile, tobacco plants through application of tobacco cell and tissue culture techniques that are well known in the art. The method of plant regeneration is chosen so as to be compatible with the method of transformation. Verification of the stable presence and the orientation of the PMT sequence in the genome of putatively transgenic tobacco plants is by Mendelian inheritance of the PMT sequence, as revealed by standard methods of DNA analysis applied to progeny resulting from controlled crosses.

After regeneration of transgenic tobacco plants from transformed cells, the introduced PMT sequence is readily transferred to other tobacco

-31-

varieties through conventional plant breeding practices and without undue experimentation.

Decreased levels of nicotine in the PMT antisense transgenic tobacco plants are detected by
5 standard nicotine assays.

Those familiar with the recombinant DNA methods described above will recognize that one could employ a full-length PMT cDNA molecule or a full-length PMT chromosomal gene, joined in the sense orientation,
10 with appropriate operably linked regulatory sequences, to construct transgenic tobacco cells and plants. (Those of skill in the art will also recognize that appropriate regulatory sequences for expression of genes in the sense orientation include any one of the known
15 eukaryotic translation start sequences, in addition to the promoter and polyadenylation/transcription termination sequences described above). Such transformed tobacco plants are characterized by increased levels of PMT protein, and thus by higher
20 nicotine content than untransformed control tobacco plants.

It should be understood, therefore, that use of PMT DNA sequences to decrease or to increase levels of PMT protein, and thereby to decrease or increase the
25 nicotine content in tobacco plants, falls within the scope of the present invention.

In order that this invention may be better understood, the following examples are set forth. These examples are for purposes of illustration only,
30 and are not to be construed as limiting the scope of the invention in any matter.

-32-

EXAMPLESComposition of Buffer SolutionsBuffer A

- 5 50 mM Tris/HCl, pH 7.5
 5 mM EDTA (free acid)
 20% (v/v) glycerol
 2 mM DTT
 0.5% (w/v) sodium ascorbate
 2% (w/v) PEG 400
10 0.4 mg/l PMSF (from a 1 mg/ml stock solution)
 0.4 mg/l leupeptin (from a 1 mg/ml stock solution)
 100 g/l PVPP
 40 g/l Amberlite XAD-4

Buffer B

- 15 10 mM Tris/HCl, pH 7.5
 1 mM EDTA (free acid)
 20% (v/v) glycerol 2 mM DTT
 0.4 mg/l PMSF (from a 1 mg/ml stock solution)
 0.4 mg/l leupeptin (from a 1 mg/ml stock solution)

20 Buffer C

 10 mM Tris/HCl, pH 7.5
 1 mM EDTA (free acid)
 20% (v/v) glycerol 2 mM DTT

Protease Inhibitor Stock Solutions

- 25 PMSF (1 mg/ml) was dissolved in dimethylformamide
 and stored in 2.1 ml aliquots at -20°C until use.

 Leupeptin (1 mg/ml) was dissolved in distilled
 water and stored in 2.1 ml aliquots at -20°C until
 use.

30 Preparation of Crude Extract

- Approximately one kg of roots from
 hydroponically grown tobacco (*Nicotiana tabacum* L. var.
 Burley 21) plants was harvested at 3 days after topping.
 The harvested roots were washed with cold water and
35 placed on a Buchner funnel, where water was removed by
 aspiration. The washed roots were stored frozen at
 -80°C. The frozen roots were added to 2.5 liters of

-33-

Buffer A that had been chilled into a frozen slurry, in a one-gallon Waring blender. The roots were mixed into the buffer slurry with a large spoon. The blender was started on a low speed setting, followed by additional
5 homogenization at a medium speed setting. Care was taken to avoid permitting the temperature of the homogenate to rise above 3-5°C.

The extract was dispensed into centrifuge bottles, and insoluble debris was pelleted by
10 centrifugation at 13,680 x g for 70 minutes at 4°C.

The supernatant was decanted, and its volume was 2.37 l. Approximately 0.77 g of DTT was added to the extract.

Ammonium Sulfate Fractionation

15 Crystalline ammonium sulfate was slowly added to the extract in the amount of 22.6 g per 100 ml of extract, so as to bring the extract to 40% of saturation with ammonium sulfate. The extract with ammonium sulfate was stirred for two hours at 4°C.

20 The 40% ammonium sulfate precipitate was removed by centrifugation at 27,500 x g for 30 min at 4°C. An additional 0.33 g of DTT was added per liter of extract. Crystalline ammonium sulfate, in the amount of 15.3 g per 100 ml of extract, was slowly added to the
25 extract, so as to increase the ammonium sulfate concentration from 40% to 65% saturation. The extract with 65% ammonium sulfate was stirred overnight at 4°C. The 40-65% ammonium sulfate fraction was pelleted by centrifugation at 27,500 x g for 70 minutes at 4°C, and
30 the supernatant was discarded.

The 40-65% ammonium sulfate precipitate was dissolved in Buffer B to yield a total volume of 200 ml, and then 17.53 g of NaCl was added and allowed to dissolve during stirring on ice. The dissolved 40-65%

-34-

fraction with added NaCl was centrifuged at 47,800 x g for 30 min at 4°C, and the pellets were discarded.

Preparation of a crude extract and ammonium sulfate fractionation were performed 3 more times, substantially as described above, and the 4 resulting 40-65% ammonium sulfate fractions (200 ml each) were pooled. The 800 ml pool thus formed represented a total of 5.239 kg of root tissue.

Hydrophobic Interaction Chromatography

10 A phenyl-Sepharose CL 4B (Pharmacia Inc., Piscataway, N.J., Cat. No. 17-0810-01) hydrophobic interaction column (5 cm x 20 cm) was equilibrated with Buffer C supplemented with 1.5 M NaCl. An 800 ml pool of 40-65% clarified ammonium sulfate fraction, 15 representing 5.239 kg of root tissue, was then loaded onto the equilibrated phenyl-Sepharose column. The column was washed with Buffer C supplemented with 1.5 M NaCl until a stable baseline of 280 nm absorbance was obtained, indicating that practically all unbound 20 protein had been removed. PMT was then eluted with a 2 l, linear gradient of NaCl decreasing from 1.5 M to 0.0 M in Buffer C. The column was further washed with an additional 1 l of Buffer C. Fractions of 12 ml each were collected, and fractions (every third fraction in 25 and around the PMT activity peak, and every tenth fraction elsewhere in the gradient) were subsequently assayed for PMT activity as described below. The hydrophobic interaction chromatography was carried out at 4°C, with a flow rate of 4.7 ml/min.

30 Phenyl-Sepharose fractions #86 through #116, which contained PMT activity, were pooled and the pool was dialyzed for about 18 hours, against 9 l of Buffer C, with constant stirring. The dialyzed sample was

-35-

separated into 4 aliquots of 100 ml each, and stored at -80°C.

Assay of PMT Activity

Each reaction tube contained the following:

5	12.5	μmol	Tris/HCl pH 8.3
	0.25	μmol	EDTA
	1.25	μmol	2-mercaptoethanol
	0.9	μmol	putrescine
	0.15	μmol	uplabelled S-adenosylmethionine
10	0.18	μmol	[¹⁴ C-methyl]S-adenosylmethionine (57 nCi/nmol) <u>enzyme sample</u>

Total Volume = 0.25 ml

The reaction was started by addition of the enzyme sample, and it was carried out at 30°C for 30 minutes. The reaction was stopped by addition of 0.5 ml of 10% (w/v) NaOH saturated with NaCl.

The radioactive product, N-[¹⁴C-methyl]putrescine, was separated from the substrate by solvent extraction into chloroform. After vortexing the stopped reaction mixture with 1 ml of chloroform for 90 seconds, the organic and aqueous phases were separated by centrifugation at 1600 x g_w for 5 minutes. A 0.5 ml aliquot of the organic phase was then assayed. The 0.5 ml aliquot of the organic phase was added to 9.5 ml of liquid scintillation cocktail (Beckman Instruments, Columbia, MD) and radioactivity was measured by standard procedures with a liquid scintillation counter.

One unit of PMT activity is defined as one nanomole of product formed per 30 min., at 30°C.

Negative controls were included with all PMT assays. Negative controls consisted of reaction mixtures minus enzyme, or reaction stopped with NaOH at time zero.

-36-

Anion Exchange Chromatography

Two 100 ml aliquots of the phenyl-Sepharose-purified sample were thawed and then loaded, at 4°C, at a flow rate of 1.5 ml/min, onto a DEAE-Sepharose "Fast Flow" (Pharmacia-LKB, Piscataway, NJ, Cat. No. 17-0709-01, Lot No. OB-05854) column (1 cm x 14.5 cm) that had been equilibrated at 4°C with Buffer C.

The DEAE-Sepharose column was then washed at a flow rate of 1.5 ml/min with 70 ml Buffer C containing 10 mM NaCl until a stable 280 nm baseline was obtained. The column was then re-equilibrated with 50 ml of Buffer C without NaCl. The column was then raised to room temperature (24°C), and the void volume of the column was replaced with Buffer C containing 5 mM putrescine (Sigma Chemical Co., St. Louis, MO, Cat. No. P7505, Lot No. 39F0039). The column was held at 24°C with no flow for about 1 hour, and then PMT was eluted at 24°C with 632 ml of Buffer C containing 5 mM putrescine, at a flow rate of 0.7 ml/min (15 hours).

PMT Concentration by Adsorption

The eluted PMT from the DEAE-Sepharose column was collected directly onto a column (1 cm x 3 cm) of omega-aminoethyl-Sepharose 4B ("AHS") (Sigma Chemical Co., St. Louis, MO, Cat. No. A8894) that was maintained at 4°C. PMT was eluted from the AHS column with Buffer C containing 1.5 M NaCl, at a flow rate of 1.6 ml/min. Four fractions of 12-15 ml each were collected and assayed for PMT activity as described above. The first fraction (14.7 ml) contained more than 80% of the total PMT activity recovered from the AHS concentration column.

-37-

Ultrafiltration

For further concentration, 13.7 ml of the first AHS fraction was divided into 6 aliquots and placed in "Centricon 30" (Amicon, Danvers, MA) ultrafiltration devices and concentrated about 25-fold. Concentrates from six such devices were pooled, diluted about 80-fold with Buffer C without added salt, and subjected to a second round of ultrafiltration in a single "Centricon 30," until the total volume was about 150 μ l. The 150 μ l of concentrate was stored at -80°C .

Preparative Isoelectric Focussing

PMT purified through the DEAE/AHS stage (including concentration by ultrafiltration) was further purified by isoelectric focussing. Preparative scale isoelectric focussing was performed with commercially available ampholytes (Pharmacia-LKB, Piscataway, NJ) in a sucrose density gradient (1.6 cm x 21 cm). The pH gradient was prepared according to the ampholyte vendor's instructions, and spanned the pH range from about 5.3 to about 6.3. Focussing was carried out for about 3 hours with application of from 1,000 to 4,000 volts (power between 1 and 4 watts). Fractions of 1 ml each were collected after focussing, and the pH and PMT activity of each fraction was measured. Focussing and fraction collection were done at 4°C .

Figure 4 is a dual plot of relative PMT activity and pH versus fraction number (i.e., location in the sucrose density gradient), after isoelectric focussing. The data from the experiment depicted in Figure 4 indicated the isoelectric point of tobacco PMT to be approximately 5.7. In other isoelectric focussing experiments the pI of tobacco PMT appeared to be as low as 5.0 and as high as 5.8. Those of skill in the art will recognize that in practice, numerous factors affect

-38-

apparent pI, and thus pI measurements normally exhibit some variation.

Assessment of Relative Purity of PMT

Relative purity of PMT at successive steps in the purification process was assessed by specific activity measurements (Table 1). The purification (fold) values shown in Table 1 are underestimates of the actual degree of purification from tobacco root crude extract, because the 40-65% ammonium sulfate fraction was taken as 100%, for activity yield calculations.

TABLE 1

Process Stage	Total Protein (mg)	Specific Activity (units/mg)	Activity Yield (%)	Purification (fold)
Ammonium Sulfate	4128*	47.9	100.0	1.0
Phenyl-Sepharose	680	134.6	46.3	2.8
DEAE/AHS	1.76**	5203	7.7**	108.6
* Pool of 40-65% ammonium sulfate fractions from 4 separate crude extracts.				
** Represents only half of material from phenyl-Sepharose column.				

Relative purity of PMT at successive steps in the present process was also assessed by the standard procedure of SDS-PAGE. Figure 1 shows SDS-PAGE protein band patterns displayed (upon silver staining) by samples at each of the steps in the PMT purification process. Samples on the gel were as follows: lanes 1 and 6, molecular weight standard proteins (listed above, in Brief Description of the Figures); lane 2, 40-65% ammonium sulfate fraction; lane 3, PMT activity peak fraction from phenyl-Sepharose column; lane 4, concentrated material from DEAE/AHS step; lane 5, PMT activity peak fraction from isoelectric focussing of

-39-

concentrated material from DEAE/AHS step. It should be noted that the PMT band (indicated by arrow) that is prominent in the DEAE/AHS-purified material (lane 4) is barely visible in the material from the preceding
5 hydrophobic interaction step (lane 3).

Molecular Weight of Tobacco PMT

The apparent molecular weight of tobacco PMT was measured in an experiment that involved isolation of PMT on a non-denaturing electrophoresis gel loaded with
10 PMT material that had been through the ammonium sulfate, phenyl-Sepharose, and DEAE/AHS/ultrafiltration stages of purification. The non-denaturing stacking gel buffer contained 0.27 M Tris/HCl (pH 6.8), 10% (v/v) glycerol, and 20 mM 2-mercaptoethanol. The nondenaturing 12.5%
15 polyacrylamide resolving gel buffer contained 0.38 M Tris/HCl (pH 8.8), 10% (v/v) glycerol, and 12 mM 2-mercaptoethanol.

A single lane from the non-denaturing gel was excised, cut in half along its length, and then cut into
20 3 mm slices. One half of each gel slice was placed directly into the standard PMT assay mixture, and the corresponding half of each gel slice was subjected to SDS-PAGE.

The non-denaturing gel slice that displayed
25 the highest PMT activity (Fig. 2) contained essentially a single protein with an apparent molecular weight of about 60 kD (Fig. 3).

Enzymatic Activity of PMT

Substrate specificity tests were carried out
30 with highly purified tobacco PMT of the present invention. 1,3-Diaminopropane and 1,5-diaminopentane (chemical analogs of putrescine) phosphatidylethanolamine (a methyl group acceptor), and

-40-

N-methylputrescine (the normal product of PMT), were compared with putrescine (1,4-diaminobutane) for ability to serve as a substrate for PMT. When 1,3-diaminopropane, 1,5-diaminopentane, and the
5 phosphatidylethanolamine were substituted for putrescine in the standard PMT assay (described above), no detectable amount of radioactive product was formed. When N-methylputrescine was substituted for putrescine in the PMT assay, radioactive product formation was less
10 than 6% of that observed with putrescine.

Apparent K_m values for the two PMT substrates, putrescine and S-adenosylmethionine, were determined by measuring PMT activity (as described above) at various rate-limiting concentrations of one substrate, while the
15 other substrate was present in excess. The K_m of partially purified tobacco PMT for putrescine was about 400 μ M. The K_m of highly purified tobacco PMT for S-adenosylmethionine was about 125 μ M. The K_m values found for putrescine, with partially purified tobacco
20 PMT, and for S-adenosylmethionine, with highly purified tobacco PMT, agree closely with published values for PMT (Mizusaki et al., supra; Feth et al., "Determination of Putrescine N-methyltransferase By High Performance Liquid Chromatography", Phytochemistry, 24, pp. 921-23
25 (1985)).

Amino-Terminal Amino Acid Sequence Analysis

Tobacco PMT for sequence analysis was isolated via SDS-PAGE of material that had been subjected to the purification steps of ammonium sulfate fractionation,
30 phenyl-Sepharose chromatography, DEAE-Sepharose chromatography with putrescine elution (followed by concentration via AHS and ultrafiltration), and free-flow isoelectric focussing. Following SDS-PAGE of the highly purified PMT, the protein bands were

-41-

electroblotted onto a polyvinylidene difluoride membrane ("Immobilon-P", Millipore, Bedford, MA) and visualized with amido black, by standard procedures. The piece of membrane bearing the "a1" band (see Fig. 5), which was one of only two bands in the highly purified preparation displaying a molecular weight characteristic of tobacco PMT (see Fig. 3), was cut out so as to avoid the adjacent "a2" band. The PMT thus isolated was subjected to amino terminal amino acid sequence analysis on an Applied Biosystems model 477A with an on-line 120A analyzer (pulse liquid phase sequencer), according to the manufacturer's recommended procedures.

The sequence of the first 17 amino acids at the amino terminus of the tobacco PMT "a1" band was found to be (SEQ ID NO:1): Leu Ser Xaa Asn Phe Leu Phe Gly Thr Ala Ser Ser Xaa Tyr Gln Tyr Glu.

The "a2" band (see Fig. 5) was the second of only two bands displaying the molecular weight of tobacco PMT (see Fig. 3). When the "a2" band (Fig. 5) was prepared and analyzed in the same manner as the "a1" band, the "a2" band yielded the following partial amino acid sequence (SEQ ID NO:2): Leu Ser Ser Asn Phe Leu Phe Gly Thr Ala Ala Pro Tyr Tyr Gln Tyr Glu.

25 Confirmation of Amino-Terminal
Sequence of 60 kD PMT Protein

Additional amounts of the 60 kD tobacco PMT protein were prepared for further amino terminal amino acid sequence analysis. On the basis of this further analysis, the sequence of the first 29 amino acids of the "a1" band was found to be (SEQ ID NO:4): Leu Ser Ser Asn Phe Leu Phe Gly Thr Ala Ser Ser Tyr Tyr Gln Tyr Glu Gly Ala Phe Leu Ser Asp Gly Val Gly Leu Ser Asn.

-42-

Partial Amino Acid Sequences of CNBr Fragments

To obtain partial internal (as opposed to amino terminal) PMT amino acid sequences, we isolated electrophoretic bands of tobacco PMT as described above and subjected the purified PMT to cyanogen bromide ("CNBr") cleavage. (CNBr cleaves polypeptides specifically at methionine residues.) We analyzed the CNBr reaction products by SDS-PAGE and found CNBr fragments with apparent molecular weights of approximately 15, 6.2 and 3 kD. We excised the electrophoretic bands containing CNBr fragments from the polyacrylamide gels, electroblotted the protein from the bands and subjected the fragments to amino acid sequence analysis (as described above).

The sequence of the first 13 amino acids of the 15 kD CNBr fragment of PMT was found to be (SEQ ID NO:5): Phe Ile Thr Glu Asn Gly Phe Ala Gly Arg Ser Gly Arg.

The sequence of the first 15 amino acids of the 6.2 kD CNBr fragment of PMT was found to be (SEQ ID NO:6): Asn Glu Pro Xaa Phe Val Ala Ile Ser Gly Tyr Arg Asp Xaa Thr.

The sequence of the first 20 amino acids of the 3 kD CNBr fragment of PMT was found to be (SEQ ID NO:7): Ala Asp Ile Glu His Tyr Ser Lys Leu Ile Asp Ala Leu Xaa Ile Lys Gly Ile Gln Phe.

Isolation and Characterization of PMT cDNA Clones

Conventional RNA PCR procedures were used to isolate PMT cDNA clones. The template in the RNA PCR procedures, was poly(A⁺) RNA isolated from tobacco roots. The starting material for poly(A⁺) PNA preparation consisted of roots from hydroponically-grown tobacco plants (*N. tabacum*, var. Burly 21). The first step in preparation of the poly(A⁺) RNA was preparation

-43-

of total RNA. Isolation of total tobacco root RNA was carried out using reagents and instructions from a commercially-available kit for preparation of total RNA (Stratagene, LaJolla, CA, Cat. No. 200345). Poly(A⁺) RNA was isolated from the total RNA preparation using a commercially-available kit for preparation of poly(A⁺) RNA (Pharmacia LKB, Piscataway, NJ, Cat. No. 27-9258-01). The oligonucleotide PCR primers were designed according to standard principles, utilizing the partial amino acid sequence data obtained from purified PMT protein, initially. In later experiments, primers were designed from sequences of previously isolated cDNA clones.

PCR Procedures

The RNA PCR procedures were carried out with a commercially available kit ("GeneAmp RNA PCR Kit", Perkin Elmer Cetus, Norwalk, CT). The procedure was essentially according to the PCR kit vendor's recommendations. The vendor's protocol was modified as follows:

Reverse transcriptase reactions

- (1) reverse primer concentration was 2.5 μ M;
 - (2) poly(A⁺) RNA amount was about 1 μ g per reverse transcriptase reaction;
 - (3) thermal cycler program included
 - 42°C 60 min.
 - 99°C 10 min.
 - 4°C 10 min.
- 1 cycle
linked to
soaker file 4°C;

Polymerase chain reactions

- (1) primer concentrations were 2.5 μ M each;
- (2) Taq polymerase enzyme was added to the

-44-

reaction last, after the 98°C cDNA
denaturation step;

(3) thermal cycler program included step-
cycle file

5	98°C	1 min.
	60°C	10 min.
	1 cycle	
	linked to	
	94°C	1 min.
10	50°C	2 min.
	72°C	3 min.
	30 cycles	
	linked to	
	step-cycle file	
15	72°C	10 min.
	linked to	
	soaker file	4°C.

After a standard chloroform extraction step,
20% (by vol.) of each PCR sample was loaded onto a 2%
20 agarose gel for electrophoretic analysis of PCR
products.

Cloning Procedures

PCR products selected for further analysis
were cloned into the commercially available vector
25 pBluescript II (SK+) (Stratagene). An aliquot of the
PCR product was treated with Klenow enzyme to generate
blunt ends on the DNA. The Klenow reaction mixtures
were as follows: approximately 1 µg of PCR-generated
DNA, each of the four deoxynucleotide triphosphates at a
30 final concentration of 80 µM each, 2.5 µl of 10X
universal buffer (Stratagene), 5 units of Klenow enzyme
(Stratagene), and water to yield a total volume of 25
µl. The Klenow reactions were run for 30 min. at room

-45-

temperature and stopped by heat-inactivation at 75°C for 10 min.

The PCR-generated DNA fragments were then ligated into pBluescript II (SK+) that been digested with restriction enzyme SmaI. The ligation reaction mixtures were as follows: approximately 1 µg of blunt-ended DNA, approximately 0.2 µg of SmaI-digested pBluescript II, 3 µl of 10X ligation buffer (Stratagene), 12 units of T4 DNA ligase, and water to yield a total volume of 30 µl. We ran the ligase reactions overnight at 4°C and stopped the reactions by heat activation at 75°C for 10 min.

Following each ligation reaction, the following bacterial transformation procedure was carried out. A suspension of commercially-obtained competent *E. coli* cells ("XL1-Blue" cells, Stratagene) was chilled on ice. Approximately 30 µl of the suspension was added to a sample of DNA (ligated as described above) that had been also chilled on ice. The competent cells were left in the presence of the ligated DNA, on ice, for 30 min. The cells were then heat shocked in the presence of the DNA for 2 min., using a 42°C water bath. Following the heat shock, the cells and DNA were returned to an ice bath for 5 min. After addition of 1 ml of LB culture medium, the cells were incubated at 37°C for one hour, with vigorous shaking. The cells were then plated on a selective medium. The plates were examined for colonies of transformed cells after an overnight incubation. For transformant selection, LB medium containing ampicillin at 100 mg/liter was used.

Selected transformants were screened by PvuII restriction analysis of DNA prepared from cultures of the individual transformant colonies. This screening method was based on the fact that clones having the desired PCR product as an insert should yield a PvuII

-46-

fragment approximately 0.5 kb larger than the PCR product. This is because there are PvuII restriction sites at nucleotide positions 529 and 977, flanking the pBluescript II multiple cloning site (MCS), into which
5 the PCR products were cloned. (See map of plasmid pBluescript II in the commercial vendor's product literature.) Clones selected in the PvuII screening were further analyzed by DNA sequence analysis.

Clone PMT1.2

10 Clone PMT1.2 (approx. 1.2 kb) was obtained by RNA PCR and cloning as described above. The template was tobacco root poly(A⁺) RNA, and the forward and reverse primers were P-20 (SEQ ID NO:8) and P-22 (SEQ ID NO:9), respectively. The sequence design of primer P-20
15 was based on amino acids 13-20 of the 60 kD PMT protein. The sequence design of primer P-22 was based on amino acids 1-7 of the 15 kD CNBr fragment of the PMT protein.

Preliminary DNA sequence analysis was carried out on clone PMT1.2. A deduced amino acid sequence
20 encoded by one of the PMT1.2 reading frames showed strong homology (94%) to the N-terminal region of the 60 kD PMT protein. A deduced amino acid sequence encoded by PMT1.2 also showed strong homology (95%) to the 3 kD CNBr fragment (described above) which represents an
25 internal region of the 60 kD PMT protein.

Clone PMT-26

Clone PMT-26 (approx. 1.2 kb) was obtained by RNA PCR and cloning as described above. The template was tobacco root poly(A⁺) RNA, and the forward and
30 reverse primers were P-24 (SEQ ID NO:10) and P-21 (SEQ ID NO:11), respectively. The sequence of primer P-24 was based on amino acids 4-10 of the intact 60 kD PMT protein and included a BamHI site at its 5' end. The

-47-

sequence of primer P-21 was based on an N-terminal methionine and amino acids 1-6 of the 15 kD CNBr fragment of the 60 kD PMT protein. In addition, primer P-21 included an EcoRI site at its 5' end. Thus, the experiment was designed to obtain a cDNA clone encoding the region from amino acid #4, near the N-terminus of the 60 kD PMT protein, to amino acid #6 of the 15 kD CNBr fragment of that protein.

Preliminary DNA sequence analysis was carried out on cDNA clone PMT-26. Clone PMT-26 encoded approximately two-thirds of the 60 kD PMT protein. The N-terminal region of a deduced amino acid sequence encoded by one of the PMT-26 reading frames showed strong homology to the N-terminal region of the 60 kD protein. The C-terminal region of that deduced amino acid sequence showed strong homology to the 3 kD CNBr fragment (described above) which represents an internal region of the 60 kD PMT protein.

Clone Q7

Clone Q7 (approx. 0.4 kb) was obtained by RNA PCR and cloning as described above. The PCR template was tobacco root poly(A⁺) RNA, and the forward and reverse PCR primers were P-18 (SEQ ID NO:12) and P-23 (SEQ ID NO:13), respectively. The sequence of primer P-18 was based on an N-terminal methionine plus amino acids 1 to 7 of a 15 kD cyanogen bromide fragment generated from the 60 kD protein purified as described above. The sequence of reverse primer P-23 consists of a poly(dt) region (20 deoxythimidines), an EcoRI site, and 3 additional deoxythimidines at the 5' end.

Clone PMT2-5

Clone PMT2-5 (approx. 1.5 kb) was obtained by utilizing RNA PCR and cloning techniques (essentially as

-48-

described above) in combination with sequence information from the partial clone, PMT-26. (In the RNA PCR procedure, the primer concentrations were 1.0 μ M rather than 2.5 μ M. In addition, first step cycle file
5 specified 50°C rather than 55°C, and the last step cycle specified 30 min. rather than 10 min.) The template was tobacco root poly(A⁺) RNA, and the forward and reverse primers were P-38 (SEQ ID NO:14) and P-36 (SEQ ID NO:15), respectively. The sequence of primer P-38 was
10 based on a DNA sequence from the 51 region of clone PMT-26 (described above) encoding the amino acids 4-11 of (SEQ ID NO:4) the N-terminal region of the 60 kD PMT protein. Primer P-36 was designed from the 3' region of DNA clone Q7. Primers P-38 and P-36 were both 100%
15 homologous to their target sequences.

DNA sequence analysis was carried out on the cloned PMT2-5 DNA insert. The PMT2-5 DNA sequence matched the PMT1.2 and Q7 DNA sequences as expected. This result confirmed that clones PMT1.2 and Q7
20 represent regions of a single transcript and thus encode regions of a single protein. Clone PMT2-5 encoded the entire 60 kD PMT protein except the N-terminal methionine and amino acids 1-3 (i.e., leu-ser-ser). In addition to PMT2-5, other clones having partial
25 homologies to clones PMT2-5 or Q7 were obtained (data not shown).

Clone PMT14-3

A forward primer, P-37, was synthesized to add an NcoI restriction site and codons for an N-terminal
30 methionine, an alanine and PMT amino acids 1-3 at the 5' end of clone PMT2-5. The sequence of primer P-37 was incorporated into the PMT2-5 DNA by means of standard DNA PCR techniques. The PMT2-5 DNA served as the template for the polymerase chain reaction, and the

-49-

forward and reverse primers were P-37 (SEQ ID NO:16) and P-36 (SEQ ID NO:15), respectively. The DNA products from the PCR were cloned as described above. Clone PMT14-3 was obtained by this method. It was expected that clone PMT14-3 encodes the complete 60 kD PMT protein with an additional alanine residue inserted immediately following the N-terminal methionine. This expected structure of clone PMT14-3 was confirmed by conventional sequence analysis. The sequence of clone PMT14-3 was found to be: (SEQ ID NO:17). What effect, if any, the inserted alanine residue will have on post-translational processing of the N-terminal methionine residue may be determined by sequence analysis of the recombinant PMT protein produced in host cells transformed with an expression vector carrying the PMT14-3 DNA insert in the sense orientation.

Recombinant DNA sequences prepared by the processes described herein are exemplified by a culture deposited in the American Type Culture Collection, Rockville, Maryland. The culture identified as *Escherichia coli*, PMT14-3 was deposited on March 11, 1993 and given the ATCC Designation 69253.

Nicotiana tabacum leaves were inoculated with *Agrobacterium tumefaciens* containing the DNA sequence of SEQ ID NO:17, either in the 5' to 3' orientation or the 3' to 5' orientation as follows:

pBI121:	control plasmid, Kan ^r (commercially available)
1.2A3-3B:	plant transformed with 1.2kb fragment of PMT gene in antisense orientation
1.2A2-40:	plant transformed with 1.2kb fragment of PMT gene in antisense orientation

-50-

1.2S3-15: plant transformed with 1.2kb
fragment of PMT gene in sense
orientation

1.2S4-16: plant transformed with 1.2kb
fragment of PMT gene in sense
orientation

5

Calluses were grown to plants and leaf samples
were taken before and after the plants were topped.
Alkaloids in the leaf samples were extracted from
transformed and control leaves, with methanolic
potassium hydroxide containing an internal standard.
The supernatant was filtered and subjected to gas
chromatographic analysis using a nitrogen-phosphorus
detector (NPD) to analyze for nicotine. The following
results were obtained:

15

Sample	% Nicotine Dry Wt. Basis	$\Delta\%$ Nicotine (Post Top minus Pre Top)
pBI121 Controls (N=14) Pre Post	0.508 \pm 0.131 3.052 \pm 0.712	2.544 \pm 0.688
1.2A3-38 Pre Post	0.540 1.077	0.537
1.2A2-40 Pre Post	0.579 1.678	1.099
1.2S3-15 Pre Post	0.910 1.882	0.972
1.2S4-16 Pre Post	0.623 1.753	1.130

20

25

30

As to be expected, nicotine levels after the
plants were topped were markedly higher than before.
However, the increase brought about by topping was
greatly reduced in plants grown from material treated in

35

-51-

accordance with this invention as compared with the
control plants.

-52-

SEQUENCE LISTING

- (1) GENERAL INFORMATION:
- (i) APPLICANT: Wahab, Samir Z.
Malik, Vedpal S.
 - (ii) TITLE OF INVENTION: PUTRESCINE N-METHYLTRANSFERASE,
RECOMBINANT DNA MOLECULES ENCODING PUTRESCINE N-
METHYLTRANSFERASE, AND TRANSGENIC TOBACCO PLANTS WITH
DECREASED ALKALOID CONTENT
 - (iii) NUMBER OF SEQUENCES: 17
 - (iv) CORRESPONDENCE ADDRESS:
 - (A) ADDRESSEE: Burns, Doane, Swecker and Mathis
 - (B) STREET: P.O. Box 1404
 - (C) CITY: Alexandria
 - (D) STATE: VA
 - (E) COUNTRY: USA
 - (F) ZIP: 22314
 - (v) COMPUTER READABLE FORM:
 - (A) MEDIUM TYPE: Floppy disk
 - (B) COMPUTER: IBM PC compatible
 - (C) OPERATING SYSTEM: PC-DOS/MS-DOS
 - (D) SOFTWARE: PatentIn Release #1.0, Version #1.25
 - (vi) CURRENT APPLICATION DATA:
 - (A) APPLICATION NUMBER:
 - (B) FILING DATE:
 - (C) CLASSIFICATION:
 - (vii) PRIOR APPLICATION DATA:
 - (A) APPLICATION NUMBER: US 07/613,160
 - (B) FILING DATE: 14-NOV-1990
 - (viii) PRIOR APPLICATION DATA:
 - (A) APPLICATION NUMBER: US 08/076,681
 - (B) FILING DATE: 01-JUN-1993
 - (viii) ATTORNEY/AGENT INFORMATION:
 - (A) NAME: Sharon E. Crane-Feury
 - (B) REGISTRATION NUMBER: 36,113
 - (C) REFERENCE/DOCKET NUMBER: PM-1696/021238-072
 - (ix) TELECOMMUNICATION INFORMATION:
 - (A) TELEPHONE: 703-836-6620
 - (B) TELEFAX: 703-836-2021
- (2) INFORMATION FOR SEQ ID NO:1:
- (i) SEQUENCE CHARACTERISTICS:
 - (A) LENGTH: 17 amino acids
 - (B) TYPE: amino acid
 - (C) STRANDEDNESS: single
 - (D) TOPOLOGY: linear
 - (ii) MOLECULE TYPE: protein
 - (iii) HYPOTHETICAL: NO

-53-

- (iv) ANTI-SENSE: NO
- (v) FRAGMENT TYPE: N-terminal
- (vi) ORIGINAL SOURCE:
 - (A) ORGANISM: Nicotiana tabacum
 - (B) STRAIN: Burley 21

(xi) SEQUENCE DESCRIPTION: SEQ ID NO:1:

Leu Ser Xaa Asn Phe Leu Phe Gly Thr Ala Ser Ser Xaa Tyr Gln Tyr
1 5 10 15

Glu

(2) INFORMATION FOR SEQ ID NO:2:

- (i) SEQUENCE CHARACTERISTICS:
 - (A) LENGTH: 17 amino acids
 - (B) TYPE: amino acid
 - (C) STRANDEDNESS: single
 - (D) TOPOLOGY: linear
- (ii) MOLECULE TYPE: protein
- (iii) HYPOTHETICAL: NO
- (iv) ANTI-SENSE: NO
- (v) FRAGMENT TYPE: N-terminal
- (vi) ORIGINAL SOURCE:
 - (A) ORGANISM: Nicotiana tabacum
 - (B) STRAIN: Burley 21

(xi) SEQUENCE DESCRIPTION: SEQ ID NO:2:

Leu Ser Ser Asn Phe Leu Phe Gly Thr Ala Ala Pro Tyr Tyr Gln Tyr
1 5 10 15

Glu

(2) INFORMATION FOR SEQ ID NO:3:

- (i) SEQUENCE CHARACTERISTICS:
 - (A) LENGTH: 17 amino acids
 - (B) TYPE: amino acid
 - (C) STRANDEDNESS: single
 - (D) TOPOLOGY: linear
- (ii) MOLECULE TYPE: protein
- (iii) HYPOTHETICAL: NO
- (iv) ANTI SENSE: NO
- (v) FRAGMENT TYPE: N-terminal
- (vi) ORIGINAL SOURCE:
 - (A) ORGANISM: Nicotiana tabacum
 - (B) STRAIN: Burley 21

-54-

(xi) SEQUENCE DESCRIPTION: SEQ ID NO:3:

Leu Ser Xaa Asn Phe Leu Phe Gly Thr Ala Xaa Xaa Xaa Tyr Gln Tyr
 1 5 10 15
 Glu

(2) INFORMATION FOR SEQ ID NO:4:

- (i) SEQUENCE CHARACTERISTICS:
 (A) LENGTH: 29 amino acids
 (B) TYPE: amino acid
 (C) STRANDEDNESS: single
 (D) TOPOLOGY: linear

(ii) MOLECULE TYPE: protein

(iii) HYPOTHETICAL: NO

(iv) ANTI-SENSE: NO

(v) FRAGMENT TYPE: N-terminal

(vi) ORIGINAL SOURCE:

- (A) ORGANISM: Nicotiana tabacum
 (B) STRAIN: Burley 21

(xi) SEQUENCE DESCRIPTION: SEQ ID NO:4:

Leu Ser Ser Asn Phe Leu Phe Gly Thr Ala Ser Ser Tyr Tyr Gln Tyr
 1 5 10 15
 Glu Gly Ala Phe Leu Ser Asp Gly Val Gly Leu Ser Asn
 20 25

(2) INFORMATION FOR SEQ ID NO:5:

- (i) SEQUENCE CHARACTERISTICS:
 (A) LENGTH: 13 amino acids
 (B) TYPE: amino acid
 (C) STRANDEDNESS: single
 (D) TOPOLOGY: linear

(ii) MOLECULE TYPE: protein

(iii) HYPOTHETICAL: NO

(iv) ANTI-SENSE: NO

(v) FRAGMENT TYPE: internal

(xi) SEQUENCE DESCRIPTION: SEQ ID NO:5:

Phe Ile Thr Glu Asn Gly Phe Ala Gly Arg Ser Gly Arg
 1 5 10

-55-

(2) INFORMATION FOR SEQ ID NO:6:

- (i) SEQUENCE CHARACTERISTICS:
 - (A) LENGTH: 15 amino acids
 - (B) TYPE: amino acid
 - (C) STRANDEDNESS: single
 - (D) TOPOLOGY: linear
- (ii) MOLECULE TYPE: protein
- (iii) HYPOTHETICAL: NO
- (iv) ANTI-SENSE: NO
- (v) FRAGMENT TYPE: internal
- (vi) ORIGINAL SOURCE:
 - (A) ORGANISM: Nicotiana tabacum
 - (B) STRAIN: Burley 21
- (xi) SEQUENCE DESCRIPTION: SEQ ID NO:6:

Asn Glu Pro Xaa Phe Val Ala Ile Ser Gly Tyr Arg Asp Xaa Thr
1 5 10 15

(2) INFORMATION FOR SEQ ID NO:7:

- (i) SEQUENCE CHARACTERISTICS:
 - (A) LENGTH: 20 amino acids
 - (B) TYPE: amino acid
 - (C) STRANDEDNESS: single
 - (D) TOPOLOGY: linear
- (ii) MOLECULE TYPE: protein
- (iii) HYPOTHETICAL: NO
- (iv) ANTI-SENSE: NO
- (v) FRAGMENT TYPE: internal
- (vi) ORIGINAL SOURCE:
 - (A) ORGANISM: Nicotiana tabacum
 - (B) STRAIN: Burley 21
- (xi) SEQUENCE DESCRIPTION: SEQ ID NO:7:

Ala Asp Ile Glu His Tyr Ser Lys Leu Ile Asp Ala Leu Xaa Ile Lys
1 5 10 15

Gly Ile Gln Phe
20

(2) INFORMATION FOR SEQ ID NO:8:

- (i) SEQUENCE CHARACTERISTICS:
 - (A) LENGTH: 23 base pairs
 - (B) TYPE: nucleic acid
 - (C) STRANDEDNESS: single
 - (D) TOPOLOGY: linear
- (ii) MOLECULE TYPE: DNA (genomic)

-56-

- (iii) HYPOTHETICAL: YES
- (iv) ANTI-SENSE: NO
- (ix) FEATURE:
 - (A) NAME/KEY: misc_feature
 - (B) LOCATION: 18
 - (D) OTHER INFORMATION: /note= "Deoxyinosine was used at this position instead of mixed nucleotides."
- (ix) FEATURE:
 - (A) NAME/KEY: misc- feature
 - (B) LOCATION: 21
 - (D) OTHER INFORMATION: /note= "Deoxyinosine was used at this position instead of mixed nucleotides."
- (xi) SEQUENCE DESCRIPTION: SEQ ID NO:8:

TAYTAYCART AYGARGGNGC NTT

- (2) INFORMATION FOR SEQ ID NO:9:
 - (i) SEQUENCE CHARACTERISTICS:
 - (A) LENGTH: 23 base pairs
 - (B) TYPE: nucleic acid
 - (C) STRANDEDNESS: single
 - (D) TOPOLOGY: linear
 - (ii) MOLECULE TYPE: DNA (genomic)
 - (iii) HYPOTHETICAL: YES
 - (iv) ANTI-SENSE: NO
 - (xi) SEQUENCE DESCRIPTION: SEQ ID NO:9:

AANCCRTTYT CNGTDATRAA CAT

- (2) INFORMATION FOR SEQ ID NO:10:
 - (i) SEQUENCE CHARACTERISTICS:
 - (A) LENGTH: 29 base pairs
 - (B) TYPE: nucleic acid
 - (C) STRANDEDNESS: single
 - (D) TOPOLOGY: linear
 - (ii) MOLECULE TYPE: DNA (genomic)
 - (iii) HYPOTHETICAL: YES
 - (iv) ANTI-SENSE: NO
 - (xi) SEQUENCE DESCRIPTION: SEQ ID NO:10:

ATCGGATCCA AYTTYTTGTT YCGNACHGC

- (2) INFORMATION FOR SEQ ID NO:11:
 - (i) SEQUENCE CHARACTERISTICS:
 - (A) LENGTH: 28 base pairs
 - (B) TYPE: nucleic acid
 - (C) STRANDEDNESS: single
 - (D) TOPOLOGY: linear

-57-

- (ii) MOLECULE TYPE: DNA (genomic)
- (iii) HYPOTHETICAL: YES
- (iv) ANTI-SENSE: NO
- (xi) SEQUENCE DESCRIPTION: SEQ ID NO:11:

ATGGAATTCC RTTYTCNGTD ATRAACAT

(2) INFORMATION FOR SEQ ID NO:12:

- (i) SEQUENCE CHARACTERISTICS:
 - (A) LENGTH: 23 base pairs
 - (B) TYPE: nucleic acid
 - (C) STRANDEDNESS: single
 - (D) TOPOLOGY: linear
- (ii) MOLECULE TYPE: DNA (genomic)
- (iii) HYPOTHETICAL: YES
- (iv) ANTI-SENSE: NO
- (xi) SEQUENCE DESCRIPTION: SEQ ID NO:12:

ATGTTYATHA CNGARAA YGG NTT

(2) INFORMATION FOR SEQ ID NO:13:

- (i) SEQUENCE CHARACTERISTICS:
 - (A) LENGTH: 29 base pairs
 - (B) TYPE: nucleic acid
 - (C) STRANDEDNESS: single
 - (D) TOPOLOGY: linear
- (ii) MOLECULE TYPE: DNA (genomic)
- (iii) HYPOTHETICAL: YES
- (iv) ANTI-SENSE: NO
- (xi) SEQUENCE DESCRIPTION: SEQ ID NO:13:

TTTGAATTCT TTTTTTTTTT TTTTTTTTTT

(2) INFORMATION FOR SEQ ID NO:14:

- (i) SEQUENCE CHARACTERISTICS:
 - (A) LENGTH: 24 base pairs
 - (B) TYPE: nucleic acid
 - (C) STRANDEDNESS: single
 - (D) TOPOLOGY: linear
- (ii) MOLECULE TYPE: DNA (genomic)
- (iii) HYPOTHETICAL: YES
- (iv) ANTI-SENSE: NO
- (xi) SEQUENCE DESCRIPTION: SEQ ID NO:14:

AATTCTTGT TCGGGACAGC CTCT

-58-

(2) INFORMATION FOR SEQ ID NO:15:

- (i) SEQUENCE CHARACTERISTICS:
(A) LENGTH: 24 base pairs
(B) TYPE: nucleic acid
(C) STRANDEDNESS: single
(D) TOPOLOGY: linear

(ii) MOLECULE TYPE: DNA (genomic)

(iii) HYPOTHETICAL: YES

(iv) ANTI-SENSE: NO

(xi) SEQUENCE DESCRIPTION: SEQ ID NO:15:

AGGCTGAACA ATTATAGTAT GATT

(2) INFORMATION FOR SEQ ID NO:16:

- (i) SEQUENCE CHARACTERISTICS:
(A) LENGTH: 45 base pairs
(B) TYPE: nucleic acid
(C) STRANDEDNESS: single
(D) TOPOLOGY: linear

(ii) MOLECULE TYPE: DNA (genomic)

(iii) HYPOTHETICAL: YES

(xi) SEQUENCE DESCRIPTION: SEQ ID NO:16:

CATGCCATGG CTCTTTCTTC TAATTTCTTG TTCGGGACAG CCTCT

(2) INFORMATION FOR SEQ ID NO:17:

- (i) SEQUENCE CHARACTERISTICS:
(A) LENGTH: 1545 base pairs
(B) TYPE: nucleic acid
(C) STRANDEDNESS: double
(D) TOPOLOGY: linear

(ii) MOLECULE TYPE: cDNA

(iii) HYPOTHETICAL: NO

(iv) ANTI-SENSE: NO

(xi) SEQUENCE DESCRIPTION: SEQ ID NO:17:

ATGGCTCTTT CTTCTAATTT CTGTTCTGGG ACAGCCTCTT CATATTACCA GTATGAAGGA	60
GCTTTCTCTCA GTGATGGGAA AGGCCTCAGC AACTGGGACG TTTTACCCA TGAAGCTGGT	120
CATGTTAAGG ATGGAAGCAA TGGAGATGTG GCTGTTGATC ACTACCATCG TTATTTGGAG	180
GACATCAAAC TCATGGCAGA TATGGGTGTG AATAGCTTTC GTTCTCTAT CTCATGGGCA	240
AGAATTCTGC CCAAGGGAAT ATTTGGAGAA GTTAATATGG CCGGAATTGA GCACTACAGT	300
AAGCTCATTG ATGCACTCCT ACAGAAAGGG ATCCAGCCGT TTGTCACATT AACACATTTT	360
GACATACCAC AAGAACTTGA GGACAGATAT GGTGGTTGGC TAAGTTCACA GATACGGGAT	420

GATTTCAGCT ATTTGCGAAA CATATGCTTC AAATACTTGG GAGATAGAGT TAAATACTGG	480
GTAACGATGA ATGAGGCTAA CTTGCTGGCC ATTAGTGGCT ATAGAGATGG GACTTGCCCT	540
CCAACTCGAT GCTCTGGTAT ATTTGGGAAT TGTAGTGTG GGGATTGAGA AAGGGAACCC	600
TTCATTGCAG CTCACAATAT GATCCTATCT CATGCAGATG CTGTCAGCAT TTACCGCACC	660
AGATATCAGA AAAGTCAAGG AGGCATGATT GGCATTACTA TGGGTTTCGA ATGGTATGAA	720
CCGTTAAGCA ATTCCTCAGA AGACATAGCT GCAACTCATA GAGCTCGATC ATTCTATGAC	780
AGTTGGTTTT TAGACCCTAT TATATTAGGA AGATATCCTG AAGAAATGGC ACAAATTTTG	840
GGATCTAATC TTCCAGAATT TTCAGTGAGT GATTTGAGAA TGTGAGTTA TGGCCTAGAT	900
TTCATTGGCA TCAATCATT TTCAGCTGTT TATATCAAAG ATTGCTTATA TTCTGCCTGT	960
GAACATGGAA ACTCTTGGTC AGAGGGTTCT TATTTAACGA CTACACAAAG AGACGGTGTC	1020
TACATCGGGG AACCTGGGGA AGTGGACTGG CAATTTGTGT ATCCACAAGG GATTGAAAAA	1080
GTTGTGATGT ATATAAAGGA CAGATTCAAC AATACTCCTA TGTTTATCAC TGAAAATGGC	1140
TTTGCTGGGA ACAGTTCTTC TATAGAGGAT GCCTTGAACG ATGTTCATAG AGTGAAATAC	1200
ATGCATAGCT ACTTAAATTC ATTGGCAAAT GCAATCAGGA AAGGTGCAGA TGTAAGGGGG	1260
TACTTTGCTT GGTCCCTTCT TGATAACTTT GAGTGGCTAG ATGGATATAC CATAAGATTT	1320
GGACTTTACT ATGTCAACTA CACAAATCTC CAGAGAACTC CAAAATATC AGCCACTAAG	1380
TATCCAGAGC TCATGTGTAA CTTTCACATA GAGCTTGAAG CACATACTGC CCAGAAATAG	1440
CGTAAGAAGA CGGTGCATAT GTGGAGGCTT GTTGAAGATT TTTTATTTA GTTCTCTATT	1500
GTTGGAAGGC AATTACTGAG CAATCATACT ATAATTGTTC AGCCT	1545

-60-

CLAIMS:

1. A recombinant DNA molecule encoding a tobacco protein characterized by the ability to catalyze the transfer of the methyl group of S-adenosylmethionine to
5 the delta amino group of putrescine.

2. A recombinant DNA molecule according to claim 1 encoding a putrescine N-methyltransferase having the amino acid sequence of SEQ ID NO:1, SEQ ID NO:2 or SEQ ID NO:3.

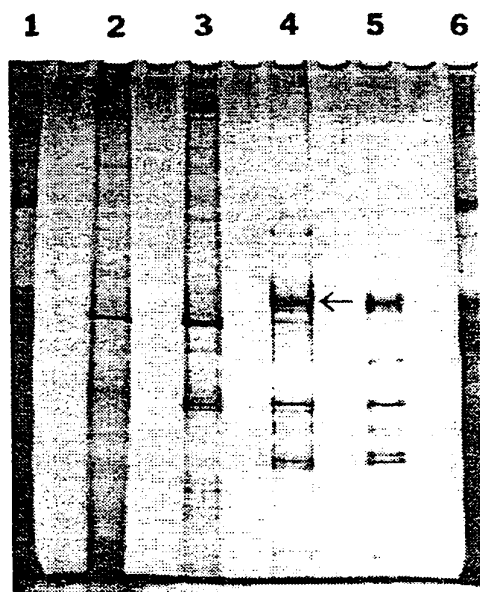
10 3. A recombinant DNA molecule according to claim 1 comprising the nucleotide sequence of the cDNA insert of plasmid PMT14-3, or comprising a nucleotide sequence that hybridizes to the said DNA insert or a nucleotide sequence that is degenerate to either of the said
15 nucleotide sequences.

4. A recombinant DNA molecule according to claim 1 comprising the nucleotide sequence of SEQ ID NO:17 or a DNA sequence which is capable of hybridizing to such nucleotide sequence.

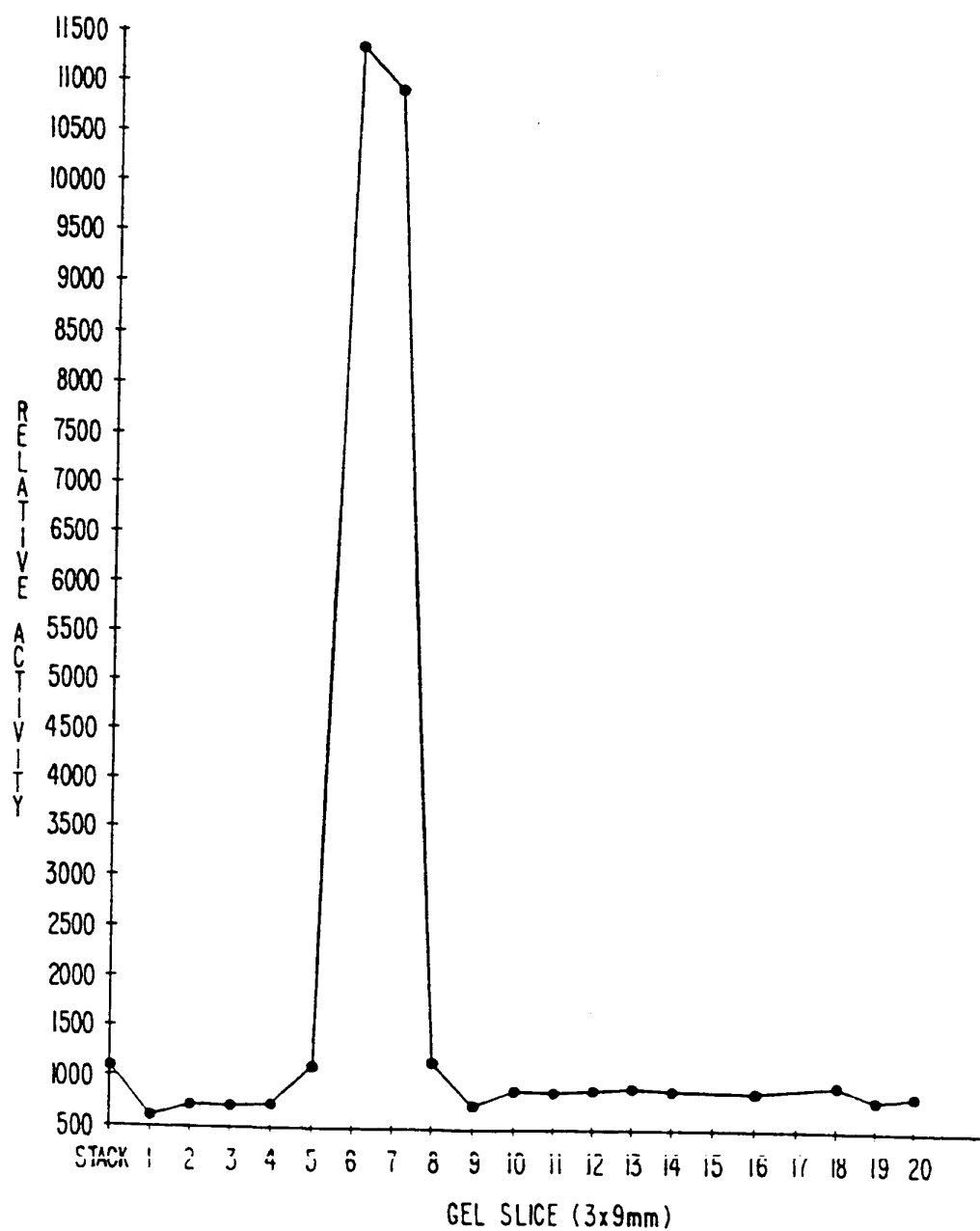
20 5. A vector comprising a DNA molecule according to claim 2, 3 or 4 operably linked to sequences capable of directing the transcription of a mRNA encoded by the isolated DNA molecule.

25 6. A vector according to claim 5 characterized by a DNA sequence encoding a complementary antisense mRNA linked to sequences capable of directing the transcription of such antisense mRNA.

FIG. 1

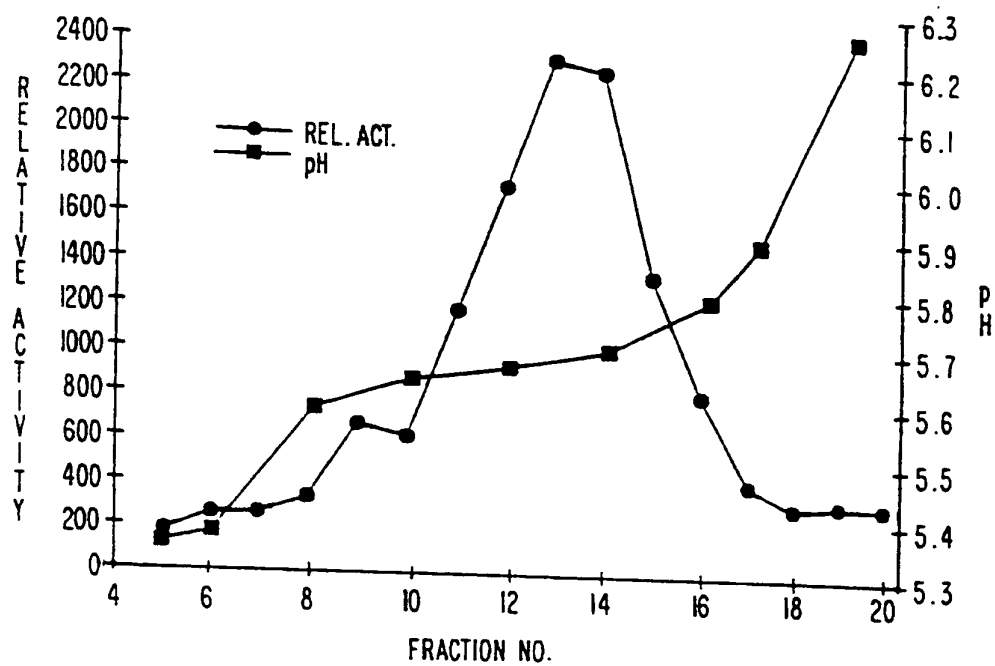


2 / 4

FIG. 2

4 / 4

FIG. 4



INTERNATIONAL SEARCH REPORT

Int: nal Application No
PCT/US 94/06106

A. CLASSIFICATION OF SUBJECT MATTER
IPC 5 C12N15/54 C12N15/82 A01H5/00

According to International Patent Classification (IPC) or to both national classification and IPC

B. FIELDS SEARCHED

Minimum documentation searched (classification system followed by classification symbols)
IPC 5 C12N A01H

Documentation searched other than minimum documentation to the extent that such documents are included in the fields searched

Electronic data base consulted during the international search (name of data base and, where practical, search terms used)

C. DOCUMENTS CONSIDERED TO BE RELEVANT

Category *	Citation of document, with indication, where appropriate, of the relevant passages	Relevant to claim No.
X	EP,A,0 486 214 (PHILIP MORRIS PRODUCTS) 20 May 1992 see the whole document ---	1-10
X	WO,A,93 05646 (TECHNOLOGY MANAGEMENT SERVICES) 1 April 1993 see the whole document ---	1,3-8
P,X	THE PLANT CELL, vol.6, no.5, May 1994 pages 723 - 735 HIBI N., ET AL. 'Gene expression in tobacco low-nicotine mutants' see figure 3 -----	1

☐ Further documents are listed in the continuation of box C.

☒ Patent family members are listed in annex.

* Special categories of cited documents :

- "A" document defining the general state of the art which is not considered to be of particular relevance
- "E" earlier document but published on or after the international filing date
- "L" document which may throw doubts on priority claim(s) or which is cited to establish the publication date of another citation or other special reason (as specified)
- "O" document referring to an oral disclosure, use, exhibition or other means
- "P" document published prior to the international filing date but later than the priority date claimed

- "T" later document published after the international filing date or priority date and not in conflict with the application but cited to understand the principle or theory underlying the invention
- "X" document of particular relevance; the claimed invention cannot be considered novel or cannot be considered to involve an inventive step when the document is taken alone
- "Y" document of particular relevance; the claimed invention cannot be considered to involve an inventive step when the document is combined with one or more other such documents, such combination being obvious to a person skilled in the art.
- "&" document member of the same patent family

Date of the actual completion of the international search

25 October 1994

Date of mailing of the international search report

- 9. 11. 94

Name and mailing address of the ISA

European Patent Office, P.B. 5818 Patentlaan 2
NL - 2280 HV Rijswijk
Tel. (+ 31-70) 340-2040, Tx. 31 651 epo nl,
Fax (+ 31-70) 340-3016

Authorized officer

Maddox, A